

SMD POWER INDUCTORS

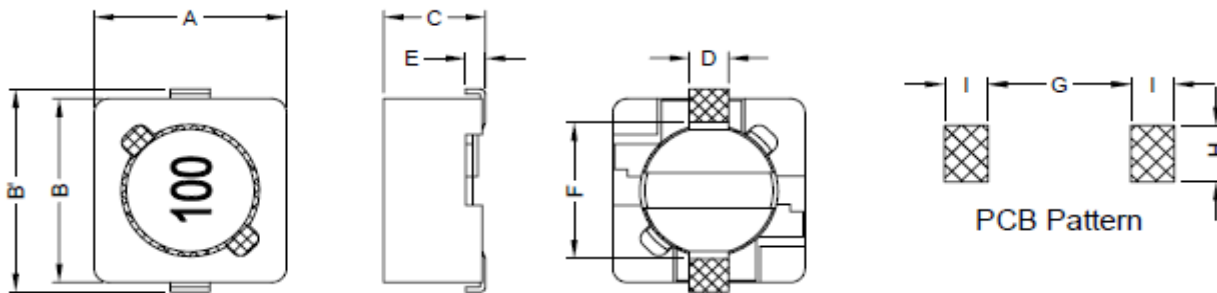
SERIE: DHS0602 5,9 x 5,9 x 3,0 mm

DIMENSIONS:

VPE : 1500



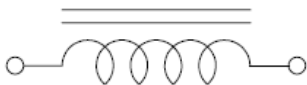
RoHS Compliant



Unit:mm

A	B	B'	C	D	E	F	G
5,90	5,90 ± 0,3	6,30	3,00 Max	1,50 Ref.	0,60 Ref.	4,60 Ref.	4,6 Ref.
H	I						
1,9 Ref.	1,4 Ref.						

SCHEMATIC:

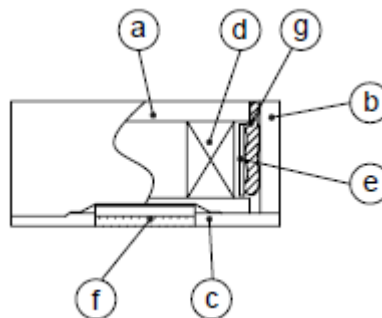


GENERAL SPECIFICATION :

- 1- Temp. rise: 40°C Max.
- 2- Rated current: Base on temp. rise & $\Delta L/L0A = 25\%$ Max
- 3- Operating temp.: -20°C to + 80°C
- 4- Storage temp.: -40°C to + 125°C
- 5- Resistance to solder heat : 260°C 10sec.

Materials :

- (a) Core : DR Ferrite Core
- (b) Core : RI Ferrite Core
- (c) Base : LCP
- (d) Wire : Enamelled Copper Wire
- (e) Tape : Mylar Tape
- (f) Terminal : Tinned Copper plate
- (g) Adhesive : Epoxy



NOTE : Specifications subject to change without notice. Please check our website for latest information

SMD POWER INDUCTORS

SERIE: DHS0602 5,9 x 5,9 x 3,0 mm



ELECTRICAL CHARACTERISTICS:

Part No.	Inductance (μ H)		Test Frequency (Hz.)	RDC (Ω) Max	IDC (A)
DHS0602-2R9SWE	2,9	+40% / -20%	7,96MHz./0,25V	0,068	1,94
DHS0602-4R0SWE	4,0	+40% / -20%	7,96MHz./0,25V	0,080	1,63
DHS0602-5R5SWE	5,5	+40% / -20%	7,96MHz./0,25V	0,096	1,40
DHS0602-100SWE	10	\pm 20%	1KHz./0,25V	0,150	1,10
DHS0602-120SWE	12	\pm 20%	1KHz./0,25V	0,200	1,00
DHS0602-150SWE	15	\pm 20%	1KHz./0,25V	0,230	0,90
DHS0602-180SWE	18	\pm 20%	1KHz./0,25V	0,270	0,80
DHS0602-220SWE	22	\pm 20%	1KHz./0,25V	0,340	0,74
DHS0602-270SWE	27	\pm 20%	1KHz./0,25V	0,380	0,66
DHS0602-330SWE	33	\pm 20%	1KHz./0,25V	0,450	0,59
DHS0602-390SWE	39	\pm 20%	1KHz./0,25V	0,490	0,54
DHS0602-470SWE	47	\pm 20%	1KHz./0,25V	0,690	0,50
DHS0602-560SWE	56	\pm 20%	1KHz./0,25V	0,780	0,46
DHS0602-680SWE	68	\pm 20%	1KHz./0,25V	1,07	0,42
DHS0602-820SWE	82	\pm 20%	1KHz./0,25V	1,21	0,38
DHS0602-101SWE	100	\pm 20%	1KHz./0,25V	1,39	0,34
DHS0602-121SWE	120	\pm 20%	1KHz./0,25V	1,65	0,31
DHS0602-151SWE	150	\pm 20%	1KHz./0,25V	2,18	0,28
DHS0602-181SWE	180	\pm 20%	1KHz./0,25V	2,77	0,26
DHS0602-221SWE	220	\pm 20%	1KHz./0,25V	3,12	0,23
DHS0602-271SWE	270	\pm 20%	1KHz./0,25V	4,38	0,22
DHS0602-331SWE	330	\pm 20%	1KHz./0,25V	4,94	0,19

NOTE : Specifications subject to change without notice. Please check our website for latest information