

SMD POWER INDUCTORS

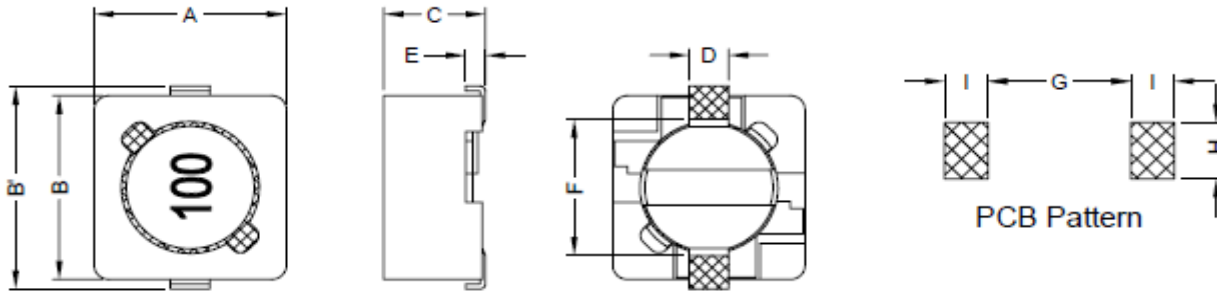
SERIE: DHS0604 6,2 x 5,9 x 5,0 mm

DIMENSIONS:

VPE: 1000pcs.



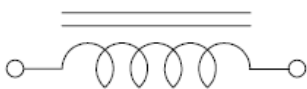
RoHS Compliant



Unit:mm

A	B	B'	C	D	E	F	G
6,20 ± 0,3	5,90 ± 0,3	6,60 ± 0,3	5,00 Max	1,50 Ref.	0,60 Ref.	4,60 Ref.	4,6 Ref.
H	I						
1,9 Ref	1,4 Ref.						

SCHEMATIC:

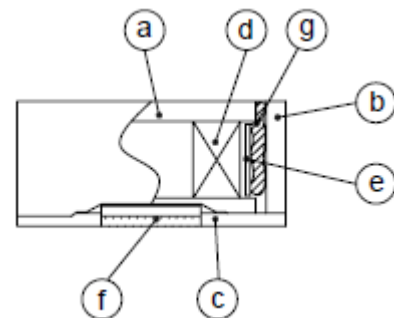


GENERAL SPECIFICATION :

- 1- Temp. rise: 40°C Max.
- 2- Rated current: Base on temp. rise & $\Delta L/L0A = 25\%$ Max
- 3- Operating temp.: -20°C to + 80°C
- 4- Storage temp.: -40°C to + 125°C
- 5- Resistance to solder heat : 260°C 10sec.

Materials :

- (a) Core : DR Ferrite Core
- (b) Core : RI Ferrite Core
- (c) Base : LCP
- (d) Wire : Enamelled Copper Wire
- (e) Tape : Mylar Tape
- (f) Terminal : Tinned Copper plate
- (g) Adhesive : Epoxy



NOTE : Specifications subject to change without notice. Please check our website for latest information

SMD POWER INDUCTORS

SERIE: DHS0604 6,2 x 5,9 x 5,0 mm



ELECTRICAL CHARACTERISTICS:

Part No.	Inductance (μ H)		Test Frequency (Hz.)	RDC (Ω) Max	IDC (A)
DHS0604 - 100SWE	10	$\pm 20\%$	1KHz./0,25V	0,12	1,35
DHS0604 - 120SWE	12	$\pm 20\%$	1KHz./0,25V	0,13	1,22
DHS0604 - 150SWE	15	$\pm 20\%$	1KHz./0,25V	0,18	1,11
DHS0604 - 180SWE	18	$\pm 20\%$	1KHz./0,25V	0,24	1,02
DHS0604 - 220SWE	22	$\pm 20\%$	1KHz./0,25V	0,27	0,91
DHS0604 - 270SWE	27	$\pm 20\%$	1KHz./0,25V	0,3	0,82
DHS0604 - 330SWE	33	$\pm 20\%$	1KHz./0,25V	0,33	0,74
DHS0604 - 390SWE	39	$\pm 20\%$	1KHz./0,25V	0,37	0,69
DHS0604 - 470SWE	47	$\pm 20\%$	1KHz./0,25V	0,52	0,62
DHS0604 - 560SWE	56	$\pm 20\%$	1KHz./0,25V	0,56	0,58
DHS0604 - 680SWE	68	$\pm 20\%$	1KHz./0,25V	0,63	0,51
DHS0604 - 820SWE	82	$\pm 20\%$	1KHz./0,25V	0,71	0,46
DHS0604 - 101SWE	100	$\pm 20\%$	1KHz./0,25V	1,03	0,42
DHS0604 - 121SWE	120	$\pm 20\%$	1KHz./0,25V	1,15	0,38
DHS0604 - 151SWE	150	$\pm 20\%$	1KHz./0,25V	1,68	0,35
DHS0604 - 181SWE	180	$\pm 20\%$	1KHz./0,25V	1,87	0,32
DHS0604 - 221SWE	220	$\pm 20\%$	1KHz./0,25V	2,08	0,29
DHS0604 - 271SWE	270	$\pm 20\%$	1KHz./0,25V	2,37	0,26
DHS0604 - 331SWE	330	$\pm 20\%$	1KHz./0,25V	2,67	0,23
DHS0604 - 391SWE	390	$\pm 20\%$	1KHz./0,25V	2,94	0,22
DHS0604 - 471SWE	470	$\pm 20\%$	1KHz./0,25V	3,93	0,2
DHS0604 - 561SWE	560	$\pm 20\%$	1KHz./0,25V	5,43	0,18
DHS0604 - 681SWE	680	$\pm 20\%$	1KHz./0,25V	7,32	0,17
DHS0604 - 821SWE	820	$\pm 20\%$	1KHz./0,25V	8,24	0,15
DHS0604 - 102SWE	1000	$\pm 20\%$	1KHz./0,25V	9,26	0,14

NOTE : Specifications subject to change without notice. Please check our website for latest information