

SMD POWER INDUCTORS

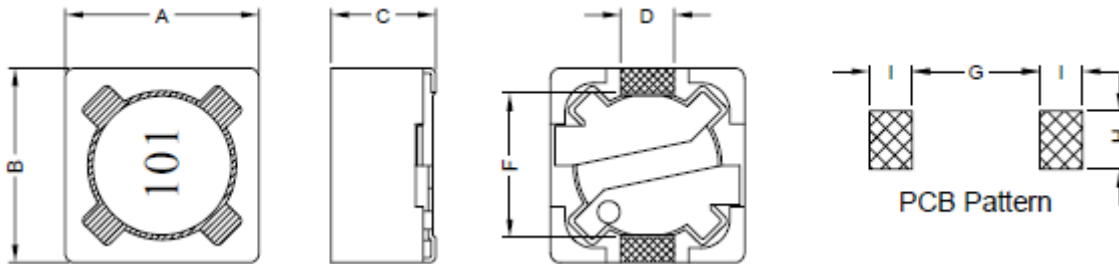
SERIE: DHS0703 7,3 x 7,3 x 3,4 mm

DIMENSIONS:

VPE: 1000



RoHS Compliant



Unit:mm

A	B	C	D	F	G	H	I
7,3 ± 0,2	7,3 ± 0,2	3,40 Max	1,80 Ref.	5,0 Ref.	4,8 Ref.	2,2 Ref.	1 ,6 Ref.

SCHEMATIC:

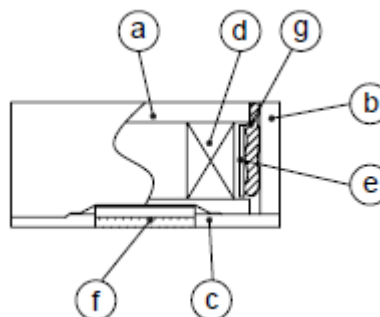


GENERAL SPECIFICATION :

- 1- Temp. rise: 40°C Max.
- 2- Rated current: Base on temp. rise & $\Delta L/L0A = 25\%$ Max
- 3- Operating temp.: -20°C to + 80°C
- 4- Storage temp.: -40°C to + 125°C
- 5- Resistance to solder heat : 260°C 10sec.

Materials:

- (a) Core : DR Ferrite Core
- (b) Core : RI Ferrite Core
- (c) Base : LCP
- (d) Wire : Enamelled Copper Wire
- (e) Tape : Mylar Tape
- (f) Terminal : Tinned Copper plate
- (g) Adhesive : Epoxy



NOTE : Specifications subject to change without notice. Please check our website for latest information

SMD POWER INDUCTORS

SERIE: DHS0703 7,3 x 7,3 x 3,4 mm



COILS ■ ELEKTRONIK ■ TRANSFORMERS

ELECTRICAL CHARACTERISTICS:

Part No.	Inductance (μ H)		Test Frequency (Hz.)	RDC (Ω) Max	IDC (A)
DHS0703-100SWE	10	$\pm 20\%$	1KHz./0,25V	0,072	1,68
DHS0703-120SWE	12	$\pm 20\%$	1KHz./0,25V	0,098	1,52
DHS0703-150SWE	15	$\pm 20\%$	1KHz./0,25V	0,13	1,33
DHS0703-180SWE	18	$\pm 20\%$	1KHz./0,25V	0,14	1,2
DHS0703-220SWE	22	$\pm 20\%$	1KHz./0,25V	0,19	1,07
DHS0703-270SWE	27	$\pm 20\%$	1KHz./0,25V	0,21	0,96
DHS0703-330SWE	33	$\pm 20\%$	1KHz./0,25V	0,24	0,91
DHS0703-390SWE	39	$\pm 20\%$	1KHz./0,25V	0,32	0,77
DHS0703-470SWE	47	$\pm 20\%$	1KHz./0,25V	0,36	0,76
DHS0703-560SWE	56	$\pm 20\%$	1KHz./0,25V	0,47	0,68
DHS0703-680SWE	68	$\pm 20\%$	1KHz./0,25V	0,52	0,61
DHS0703-820SWE	82	$\pm 20\%$	1KHz./0,25V	0,69	0,57
DHS0703-101SWE	100	$\pm 20\%$	1KHz./0,25V	0,79	0,5
DHS0703-121SWE	120	$\pm 20\%$	1KHz./0,25V	0,89	0,49
DHS0703-151SWE	150	$\pm 20\%$	1KHz./0,25V	1,27	0,43
DHS0703-181SWE	180	$\pm 20\%$	1KHz./0,25V	1,45	0,39
DHS0703-221SWE	220	$\pm 20\%$	1KHz./0,25V	1,65	0,35
DHS0703-271SWE	270	$\pm 20\%$	1KHz./0,25V	2,31	0,32
DHS0703-331SWE	330	$\pm 20\%$	1KHz./0,25V	2,62	0,28
DHS0703-391SWE	390	$\pm 20\%$	1KHz./0,25V	2,94	0,26
DHS0703-471SWE	470	$\pm 20\%$	1KHz./0,25V	4,18	0,24
DHS0703-561SWE	560	$\pm 20\%$	1KHz./0,25V	4,67	0,22
DHS0703-681SWE	680	$\pm 20\%$	1KHz./0,25V	5,73	0,19
DHS0703-821SWE	820	$\pm 20\%$	1KHz./0,25V	6,54	0,18
DHS0703-102SWE	1000	$\pm 20\%$	1KHz./0,25V	9,44	0,16

NOTE : Specifications subject to change without notice. Please check our website for latest information