

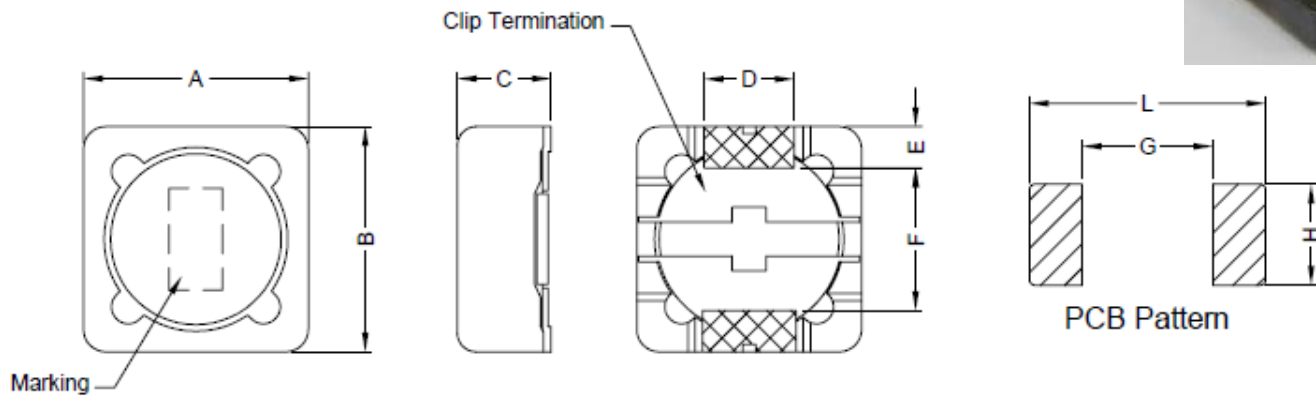
SMD POWER INDUCTORS

SERIE: DHS1204 12,5 x 12,5 x 5,0 mm

DIMENSIONS:



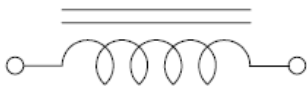
RoHS Compliant



Unit:mm

A	B	C	D	E	F	G	H	L
12,5 ± 0,3	12,5 ± 0,3	5,00 Max	5,00 Ref.	2,20 Ref.	7,60 Ref.	7,0 Ref.	5,40 Ref.	12,60 Ref.

SCHEMATIC:

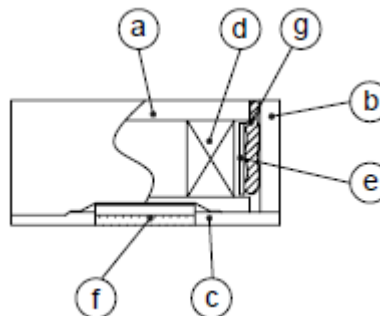


GENERAL SPECIFICATION :

- 1- Temp. rise: 40°C Max.
- 2- Rated current: Base on temp. rise & $\Delta L/L0A = 35\%$ Max
- 3- Operating temp.: -40°C to +85°C
- 4- Storage temp.: -40°C to +85°C
- 5- Resistance to solder heat : 260°C 10sec.

Materials :

- (a) Core : DR Ferrite Core
- (b) Core : RI Ferrite Core
- (c) Base : LCP
- (d) Wire : Enamelled Copper Wire
- (e) Tape : Mylar Tape
- (f) Terminal : Tinned Copper plate
- (g) Adhesive : Epoxy



NOTE : Specifications subject to change without notice. Please check our website for latest information

SMD POWER INDUCTORS

SERIE: DHS1204 12,5 x 12,5 x 5,0 mm



COILS ■ ELEKTRONIK ■ TRANSFORMERS

ELECTRICAL CHARACTERISTICS:

Part No.	Inductance (μ H)		Test Frequency (Hz.)	RDC (Ω) Max	IDC (A)
DHS1204-3R3SWE	3,3	$\pm 20\%$	1V/100K	0,015	6,5
DHS1204-4R7SWE	4,7	$\pm 20\%$	1V/100K	0,018	5,7
DHS1204-6R8SWE	6,8	$\pm 20\%$	1V/100K	0,023	4,9
DHS1204-8R2SWE	8,2	$\pm 20\%$	1V/100K	0,026	4,6
DHS1204-100SWE	10	$\pm 20\%$	1V/100K	0,028	4,5
DHS1204-120SWE	12	$\pm 20\%$	1V/100K	0,038	4
DHS1204-150SWE	15	$\pm 20\%$	1V/100K	0,052	3,2
DHS1204-180SWE	18	$\pm 20\%$	1V/100K	0,06	3,1
DHS1204-220SWE	22	$\pm 20\%$	1V/100K	0,07	2,9
DHS1204-270SWE	27	$\pm 20\%$	1V/100K	0,08	2,8
DHS1204-330SWE	33	$\pm 20\%$	1V/100K	0,097	2,7
DHS1204-390SWE	39	$\pm 20\%$	1V/100K	0,132	2,1
DHS1204-470SWE	47	$\pm 20\%$	1V/100K	0,16	1,9
DHS1204-560SWE	56	$\pm 20\%$	1V/100K	0,19	1,8
DHS1204-680SWE	68	$\pm 20\%$	1V/100K	0,22	1,5
DHS1204-820SWE	82	$\pm 20\%$	1V/100K	0,26	1,3
DHS1204-101SWE	100	$\pm 20\%$	1V/100K	0,308	1,2
DHS1204-121SWE	120	$\pm 20\%$	1V/100K	0,38	1,1
DHS1204-151SWE	150	$\pm 20\%$	1V/100K	0,53	0,95
DHS1204-181SWE	180	$\pm 20\%$	1V/100K	0,62	0,85
DHS1204-221SWE	220	$\pm 20\%$	1V/100K	0,7	0,8
DHS1204-271SWE	270	$\pm 20\%$	1V/100K	0,87	0,6
DHS1204-331SWE	330	$\pm 20\%$	1V/100K	0,99	0,5

NOTE : Specifications subject to change without notice. Please check our website for latest information