

SMD POWER INDUCTORS

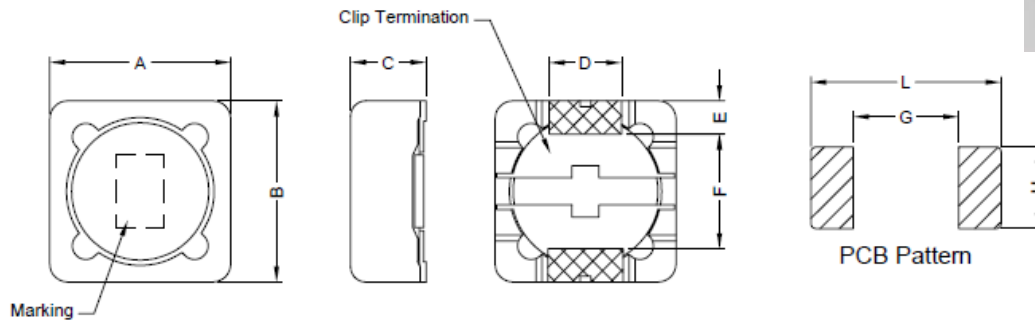
SERIE: DHS1205 12,0 x 12,0 x 6,0 mm

DIMENSIONS:

VPE : 600 pcs.



RoHS Compliant



Unit:mm								
A	B	C	D	E	F	G	H	L
12,0 ± 0,5	12,0 ± 0,5	6,0 ± 0,3	5,0 Ref.	2,2 Ref.	7,6 Ref.	7,0 Ref.	5,4 Ref.	12,6 Ref.

SCHEMATIC:

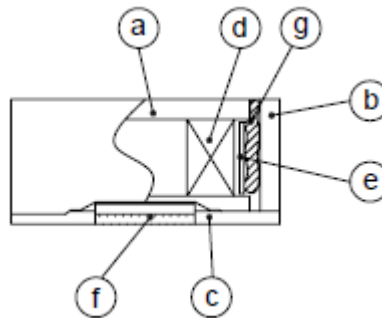


GENERAL SPECIFICATION :

- 1- Temp. rise: 40°C Max.
- 2- Rated current: Base on temp. rise & $\Delta L/L0A = 35\%$ Max
- 3- Operating temp.: -20°C to + 85°C
- 4- Storage temp.: -40°C to + /5°C
- 5- Resistance to solder heat : 260°C 10sec.

Materials :

- (a) Core : DR Ferrite Core
- (b) Core : RI Ferrite Core
- (c) Base : LCP
- (d) Wire : Enamelled Copper Wire
- (e) Tape : Mylar Tape
- (f) Terminal : Tinned Copper plate
- (g) Adhesive : Epoxy



NOTE : Specifications subject to change without notice. Please check our website for latest information

SMD POWER INDUCTORS

SERIE: DHS1205 12,0 x 12,0 x 6,0 mm



ELECTRICAL CHARACTERISTICS:

Part No.	Inductance (μH)		Test Frequency (Hz.)	RDC (Ω) Max	IDC (A)
DHS1205 - 1R3SWE	1,3	$\pm 30\%$	1V/100K	0,012	8
DHS1205 - 2R1SWE	2,1	$\pm 30\%$	1V/100K	0,014	7
DHS1205 - 3R1SWE	3,1	$\pm 30\%$	1V/100K	0,017	6
DHS1205 - 4R4SWE	4,4	$\pm 20\%$	1V/100K	0,02	5
DHS1205 - 5R8SWE	5,8	$\pm 20\%$	1V/100K	0,021	4,4
DHS1205 - 7R5SWE	7,5	$\pm 20\%$	1V/100K	0,024	4,2
DHS1205 - 100SWE	10	$\pm 20\%$	1V/100K	0,025	4
DHS1205 - 120SWE	12	$\pm 20\%$	1V / 1K	0,027	3,5
DHS1205 - 150SWE	15	$\pm 20\%$	1V / 1K	0,03	3,3
DHS1205 - 180SWE	18	$\pm 20\%$	1V / 1K	0,034	3
DHS1205 - 220SWE	22	$\pm 20\%$	1V / 1K	0,036	2,8
DHS1205 - 270SWE	27	$\pm 20\%$	1V / 1K	0,051	2,3
DHS1205 - 330SWE	33	$\pm 20\%$	1V / 1K	0,057	2,1
DHS1205 - 390SWE	39	$\pm 20\%$	1V / 1K	0,068	2
DHS1205 - 470SWE	47	$\pm 20\%$	1V / 1K	0,075	1,8
DHS1205 - 560SWE	56	$\pm 20\%$	1V / 1K	0,11	1,7
DHS1205 - 680SWE	68	$\pm 20\%$	1V / 1K	0,12	1,5
DHS1205 - 820SWE	82	$\pm 20\%$	1V / 1K	0,14	1,4
DHS1205 - 101SWE	100	$\pm 20\%$	1V / 1K	0,16	1,3
DHS1205 - 121SWE	120	$\pm 20\%$	1V / 1K	0,17	1,1
DHS1205 - 151SWE	150	$\pm 20\%$	1V / 1K	0,23	1
DHS1205 - 181SWE	180	$\pm 20\%$	1V / 1K	0,29	0,9
DHS1205 - 221SWE	220	$\pm 20\%$	1V / 1K	0,4	0,8
DHS1205 - 271SWE	270	$\pm 20\%$	1V / 1K	0,46	0,75
DHS1205 - 331SWE	330	$\pm 20\%$	1V / 1K	0,51	0,68
DHS1205 - 391SWE	390	$\pm 20\%$	1V / 1K	0,69	0,65
DHS1205 - 471SWE	470	$\pm 20\%$	1V / 1K	0,77	0,58
DHS1205 - 561SWE	560	$\pm 20\%$	1V / 1K	0,86	0,54
DHS1205 - 681SWE	680	$\pm 20\%$	1V / 1K	1.200	0,48
DHS1205 - 821SWE	820	$\pm 20\%$	1V / 1K	1.340	0,43
DHS1205 - 102SWE	1000	$\pm 20\%$	1V / 1K	1.530	0,4

NOTE : Specifications subject to change without notice. Please check our website for latest information