

# SMD POWER INDUCTORS" LowProfile"

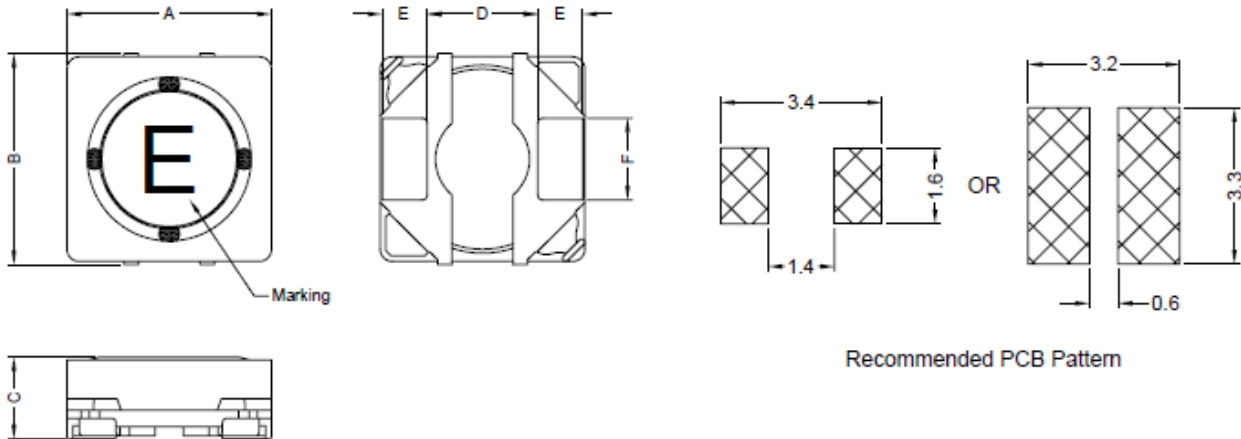
**SERIE:** DLI3012 3,0 x 3,0 x 1,2 mm

## DIMENSIONS:

VPE: 3000 pcs.



RoHS Compliant



Unit:m/m

A	B	C	D	E	F	G
3.0±0.2	3.0±0.3	1.2 Max.	1.5 Typ	0.76 Typ	1.2 Typ	0.7 Typ

## SCHEMATIC:



## MATERIALS:

Core: Ferrite

## GENERAL SPECIFICATION :

1. IDC1: Based on inductance change ( $\Delta L/L0A : \leq 30\%$ ) @ ambient temp. 25°C
2. IDC2: Based on temperature rise ( $\Delta T: 40^\circ\text{C Typ.}$ )
3. Rated Current: IDC1 or IDC2, whichever value is lower
4. Storage temp. : -40°C.....+105°C
5. Operating temp.: -40°C.....+105°C ( include self temp. rise )
6. Resistance to solder heat : 260°C 10sec.

*NOTE : Specifications subject to change without notice. Please check our website for latest information*

# SMD POWER INDUCTORS" LowProfile"

**SERIE:** DLI3012 3,0 x 3,0 x 1,2 mm



## ELECTRICAL CHARACTERISTICS

Part. No.	Inductance (uH)		Test Frequency ( Hz)	RDC ( mΩ ) ± 20%	IDC (A)	IDC (2)	Marking
-----------	-----------------	--	----------------------	------------------	---------	---------	---------

DLI3012 - 1R0KCO	1,0	30%	0,1V / 100K	55	1,5	1,8	A
DLI3012 - 1R2KCO	1,2	30%	0,1V / 100K	63	1,4	1,65	B
DLI3012 - 1R5KCO	1,5	30%	0,1V / 100K	75	1,3	1,5	C
DLI3012 - 2R2KCO	2,2	30%	0,1V / 100K	110	1	1,3	E
DLI3012 - 3R3KCO	3,3	30%	0,1V / 100K	150	0,87	1,1	G
DLI3012 - 3R9KCO	3,9	30%	0,1V / 100K	180	0,82	1	H
DLI3012 - 4R7KCO	4,7	20%	0,1V / 100K	210	0,75	0,9	I
DLI3012 - 5R6KCO	5,6	20%	0,1V / 100K	270	0,65	0,8	J
DLI3012 - 6R8KCO	6,8	20%	0,1V / 100K	330	0,6	0,7	K
DLI3012 - 8R2KCO	8,2	20%	0,1V / 100K	380	0,55	0,65	L
DLI3012 - 100KCO	10	20%	0,1V / 100K	410	0,5	0,6	M
DLI3012 - 120KCO	12	20%	0,1V / 100K	550	0,45	0,55	N
DLI3012 - 150KCO	15	20%	0,1V / 100K	680	0,4	0,45	O
DLI3012 - 220KCO	22	20%	0,1V / 100K	950	0,35	0,35	Q

*NOTE : Specifications subject to change without notice. Please check our website for latest information.*