

SMD POWER INDUCTORS" LowProfile"

SERIE: DLI4015 4,0 x 4,0 x 1,5 mm

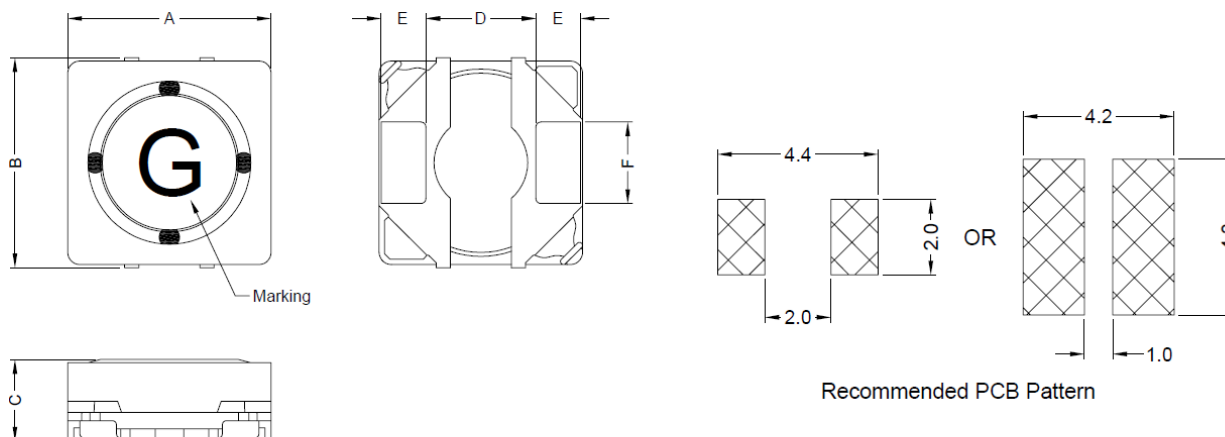


DIMENSIONS:

VPE: 3000 pcs.



RoHS Compliant



Unit:m/m

A	B	C	D	E	F	G
4.0±0.2	4.0±0.3	1.5 Max.	2.1 Typ	0.96 Typ	1.6 Typ	1.1 Typ

SCHEMATIC:



MATERIALS:

Core: Ferrite

GENERAL SPECIFICATION :

1. IDC1: Based on inductance change ($\Delta L/L0A : \leq 30\%$) @ ambient temp. 25°C
2. IDC2: Based on temperature rise ($\Delta T: 40^\circ\text{C Typ.}$)
3. Rated Current: IDC1 or IDC2, whichever value is lower
4. Storage temp. : -40°C.....+105°C
5. Operating temp.: -40°C.....+105°C (include self temp. rise)
6. Resistance to solder heat : 260°C 10sec.

NOTE : Specifications subject to change without notice. Please check our website for latest information

SMD POWER INDUCTORS" LowProfile"

SERIE: DLI4015 4,0 x 4,0 x 1,5 mm



ELECTRICAL CHARACTERISTICS

Part. No.	Inductance (uH)		Test Frequency (Hz)	RDC (mΩ) ± 20%	IDC (A)	IDC (2)	Marking
-----------	-----------------	--	----------------------	------------------	---------	---------	---------

DLI4015 - 1R0SWE	1,0	30%	0,1V / 100K	43	2,3	2,3	A
DLI4015 - 1R5SWE	1,5	30%	0,1V / 100K	50	2	2,05	C
DLI4015 - 2R2SWE	2,2	30%	0,1V / 100K	57	1,7	1,85	E
DLI4015 - 3R3SWE	3,3	30%	0,1V / 100K	80	1,3	1,6	G
DLI4015 - 4R7SWE	4,7	20%	0,1V / 100K	99	1,1	1,25	I
DLI4015 - 5R6SWE	5,6	20%	0,1V / 100K	120	1	1,2	J
DLI4015 - 6R8SWE	6,8	20%	0,1V / 100K	130	1	1,15	K
DLI4015 - 100SWE	10,0	20%	0,1V / 100K	190	0,78	1	M
DLI4015 - 150SWE	15,0	20%	0,1V / 100K	280	0,63	0,88	O
DLI4015 - 220SWE	22,0	20%	0,1V / 100K	340	0,57	0,8	Q
DLI4015 - 330SWE	33,0	20%	0,1V / 100K	530	0,44	0,56	S
DLI4015 - 470SWE	47,0	20%	0,1V / 100K	750	0,35	0,4	U
DLI4015 - 101SWE	100,0	20%	0,1V / 100K	1730	0,27	0,3	Y

NOTE : Specifications subject to change without notice. Please check our website for latest information.