

# SMD POWER INDUCTORS" LowProfile"

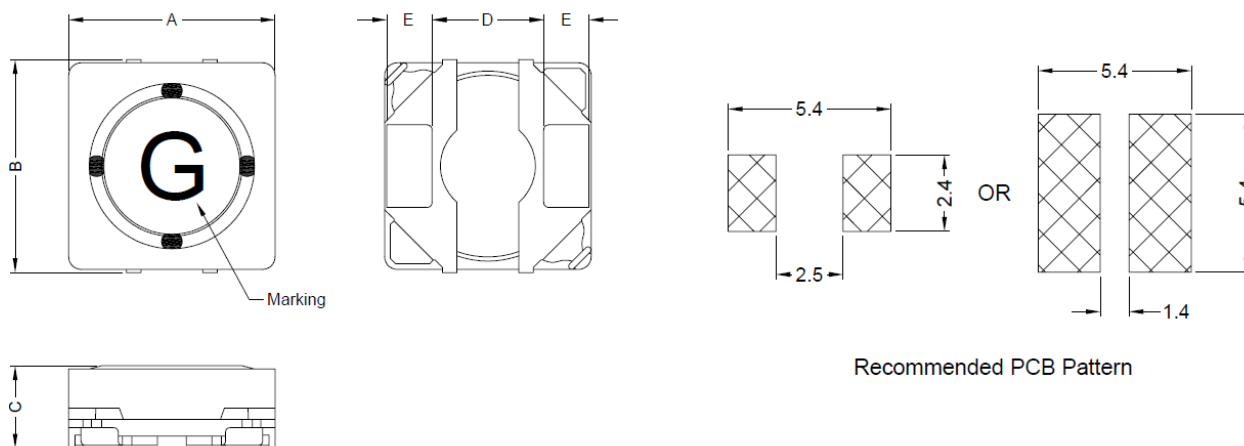
**SERIE:** DLI5012 5,0 x 5,0 x 1,2 mm

## DIMENSIONS:

VPE: 3000 pcs.



RoHS Compliant



Recommended PCB Pattern

Unit:m/m

A	B	C	D	E	F	G
5.0±0.2	5.0±0.3	1.2 Max.	2.7 Typ	1.16 Typ	2.0 Typ	1.5 Typ

## SCHEMATIC:



## MATERIALS:

Core: Ferrite

## GENERAL SPECIFICATION :

1. IDC1: Based on inductance change ( $\Delta L/L0A : \leq 30\%$ ) @ ambient temp. 25°C
2. IDC2: Based on temperature rise ( $\Delta T: 40^\circ\text{C Typ.}$ )
3. Rated Current: IDC1 or IDC2, whichever value is lower
4. Storage temp. : -40°C.....+105°C
5. Operating temp.: -40°C.....+105°C ( include self temp. rise )
6. Resistance to solder heat : 260°C 10sec.

*NOTE : Specifications subject to change without notice. Please check our website for latest information*

# SMD POWER INDUCTORS" LowProfile"

**SERIE:** DLI5012 5,0 x 5,0 x 1,2 mm



## ELECTRICAL CHARACTERISTICS

Part. No.	Inductance (uH)		Test Frequency ( Hz)	RDC ( mΩ ) ± 20%	IDC (A)	IDC (2)	Marking
<b>DLI5012 - 1R0SWE</b>	1,0	30%	0,1V / 100K	45	2,5	2,3	A
<b>DLI5012 - 1R5SWE</b>	1,5	30%	0,1V / 100K	52	2,1	2	C
<b>DLI5012 - 2R2SWE</b>	2,2	30%	0,1V / 100K	71	1,7	1,7	E
<b>DLI5012 - 3R3SWE</b>	3,3	30%	0,1V / 100K	80	1,4	1,5	G
<b>DLI5012 - 4R7SWE</b>	4,7	20%	0,1V / 100K	120	1,2	1,3	I
<b>DLI5012 - 6R8SWE</b>	6,8	20%	0,1V / 100K	150	1	1,1	K
<b>DLI5012 - 100SWE</b>	10	20%	0,1V / 100K	220	0,75	1	M
<b>DLI5012 - 150SWE</b>	15	20%	0,1V / 100K	320	0,65	0,85	O
<b>DLI5012 - 220SWE</b>	22	20%	0,1V / 100K	430	0,53	0,7	Q
<b>DLI5012 - 330SWE</b>	33	20%	0,1V / 100K	680	0,42	0,5	S
<b>DLI5012 - 470SWE</b>	47	20%	0,1V / 100K	1050	0,3	0,38	U

*NOTE : Specifications subject to change without notice. Please check our website for latest information.*