

SMD POWER INDUCTORS

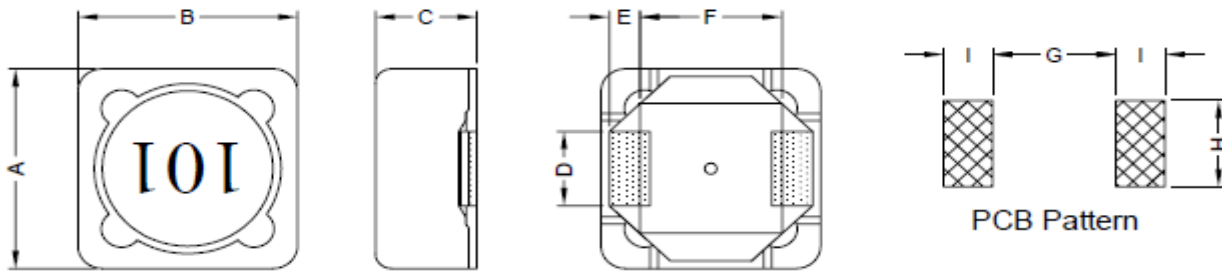
SERIE: DLS1203 12,5 x 12,5 x 3,9 mm

DIMENSIONS:

VPE: 800pcs.



RoHS Compliant



Unit: mm

A	B	C	D	E	F	G	H	I
12,5 ± 0,5	12,5 ± 0,5	3,90 Max	5,0 ± 0,2	2,2 ± 0,2	7,6 ± 0,2	7,0 Ref.	5,4 Ref.	2,8 Ref.

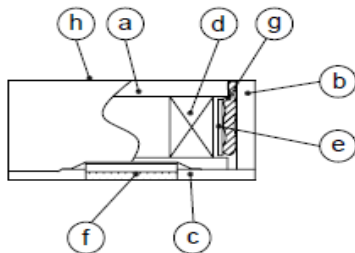
SCHEMATIC:



GENERAL SPECIFICATION :

- 1- Temp. rise: 45°C Max.
- 2- Rated current: Base on temp. rise & $\Delta L/L0A = 20\%$ Max
- 3- Operating temp.: -20°C to + 80°C
- 4- Storage temp.: -40°C to + 125°C
- 5- Resistance to solder heat : 260°C 10sec.

Materials :



- (a) Core : DR Ferrite Core
- (b) Core : SI Ferrite Core
- (c) Base : LCP
- (d) Wire : Enamelled Copper Wire
- (e) Tape : Mylar Tape
- (f) Terminal : Tinned Copper Plate
- (g) Adhesive : Epoxy
- (h) Ink : Bon Margue

NOTE : Specifications subject to change without notice. Please check our website for latest information

SMD POWER INDUCTORS

SERIE: DLS1203 12,5 x 12,5 x 3,9 mm



ELECTRICAL CHARACTERISTICS:

Part No.	Inductance (μ H)		Test Frequency (Hz.)	RDC (m Ω) Max	IDC (A)
DLS1203 - 1R5SWE	1,5	$\pm 30\%$	1V / 100K	13	7,8
DLS1203 - 2R2SWE	2,2	$\pm 30\%$	1V / 100K	15	6,8
DLS1203 - 3R9SWE	3,9	$\pm 30\%$	1V / 100K	26	5,5
DLS1203 - 5R6SWE	5,6	$\pm 30\%$	1V / 100K	32	4,8
DLS1203 - 8R2SWE	8,2	$\pm 30\%$	1V / 100K	45	4,1
DLS1203 - 100SWE	10	$\pm 20\%$	1V / 100K	50	3,9
DLS1203 - 120SWE	12	$\pm 20\%$	1V / 100K	60	3,5
DLS1203 - 150SWE	15	$\pm 20\%$	1V / 100K	80	3
DLS1203 - 180SWE	18	$\pm 20\%$	1V / 100K	100	2,7
DLS1203 - 220SWE	22	$\pm 20\%$	1V / 100K	110	2,5
DLS1203 - 270SWE	27	$\pm 20\%$	1V / 100K	130	2,2
DLS1203 - 330SWE	33	$\pm 20\%$	1V / 100K	160	2,1
DLS1203 - 390SWE	39	$\pm 20\%$	1V / 100K	180	2
DLS1203 - 470SWE	47	$\pm 20\%$	1V / 100K	220	1,8
DLS1203 - 560SWE	56	$\pm 20\%$	1V / 100K	260	1,6
DLS1203 - 680SWE	68	$\pm 20\%$	1V / 100K	310	1,5
DLS1203 - 820SWE	82	$\pm 20\%$	1V / 100K	360	1,4
DLS1203 - 101SWE	100	$\pm 20\%$	1V / 100K	400	1,3
DLS1203 - 121SWE	120	$\pm 20\%$	1V / 100K	530	1,1
DLS1203 - 151SWE	150	$\pm 20\%$	1V / 100K	610	1
DLS1203 - 181SWE	180	$\pm 20\%$	1V / 100K	800	0,9
DLS1203 - 221SWE	220	$\pm 20\%$	1V / 100K	970	0,85
DLS1203 - 271SWE	270	$\pm 20\%$	1V / 100K	1200	0,75
DLS1203 - 331SWE	330	$\pm 20\%$	1V / 100K	1350	0,7

NOTE : Specifications subject to change without notice. Please check our website for latest information