

SMD POWER INDUCTORS

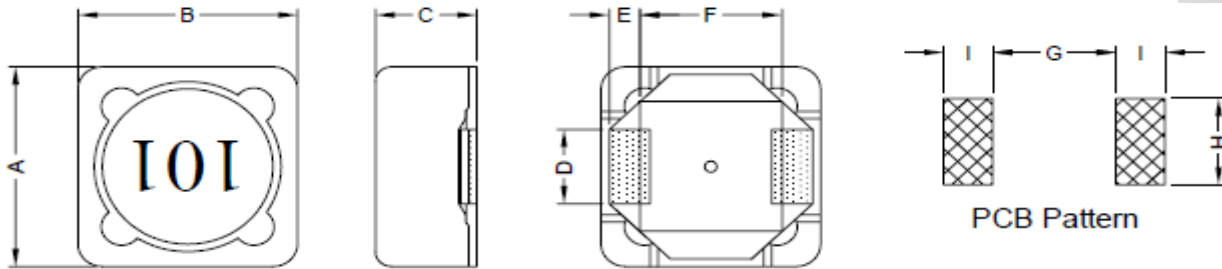
SERIE: DLS1204 12,5x12,5x4,6mm

DIMENSIONS:

VPE: 600pcs.



RoHS Compliant



Unit: mm

A	B	C	D	E	F	G	H	I
12,5 ± 0,5	12,5 ± 0,5	4,60 Max	5,0 ± 0,2	2,2 ± 0,2	7,6 ± 0,2	7,0 Ref.	5,4 Ref.	2,8 Ref.

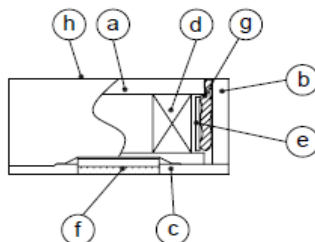
SCHEMATIC:



GENERAL SPECIFICATION :

- 1- Temp. rise: 45°C Max.
- 2- Rated current: Base on temp. rise & $\Delta L/L0A = 20\%$ Max
- 3- Operating temp.: -20°C to + 80°C
- 4- Storage temp.: -40°C to + 125°C
- 5- Resistance to solder heat : 260°C 10sec.

Materials :



- (a) Core : DR Ferrite Core
- (b) Core : SI Ferrite Core
- (c) Base : LCP
- (d) Wire : Enamelled Copper Wire
- (e) Tape : Mylar Tape
- (f) Terminal : Tinned Copper Plate
- (g) Adhesive : Epoxy
- (h) Ink : Bon Margue

NOTE : Specifications subject to change without notice. Please check our website for latest information

SMD POWER INDUCTORS

SERIE: DLS1204 12,5x12,5x4,6mm



COILS ■ ELEKTRONIK ■ TRANSFORMERS

ELECTRICAL CHARACTERISTICS:

Part No.	Inductance (μ H)		Test Frequency (Hz.)	RDC (m Ω) Max	IDC (A)
DLS1204 - 3R3SWE	3,3	$\pm 30\%$	1V / 100K	15	6,5
DLS1204 - 4R7SWE	4,7	$\pm 30\%$	1V / 100K	18	5,7
DLS1204 - 6R8SWE	6,8	$\pm 30\%$	1V / 100K	23	4,9
DLS1204 - 100SWE	10	$\pm 20\%$	1V / 100K	28	4,5
DLS1204 - 120SWE	12	$\pm 20\%$	1V / 100K	38	4
DLS1204 - 150SWE	15	$\pm 20\%$	1V / 100K	52	3,2
DLS1204 - 180SWE	18	$\pm 20\%$	1V / 100K	60	3,1
DLS1204 - 220SWE	22	$\pm 20\%$	1V / 100K	70	2,9
DLS1204 - 270SWE	27	$\pm 20\%$	1V / 100K	80	2,8
DLS1204 - 330SWE	33	$\pm 20\%$	1V / 100K	97	2,7
DLS1204 - 390SWE	39	$\pm 20\%$	1V / 100K	132	2,1
DLS1204 - 470SWE	47	$\pm 20\%$	1V / 100K	150	1,9
DLS1204 - 560SWE	56	$\pm 20\%$	1V / 100K	190	1,8
DLS1204 - 680SWE	68	$\pm 20\%$	1V / 100K	220	1,5
DLS1204 - 820SWE	82	$\pm 20\%$	1V / 100K	260	1,3
DLS1204 - 101SWE	100	$\pm 20\%$	1V / 100K	308	1,2
DLS1204 - 121SWE	120	$\pm 20\%$	1V / 100K	380	1,1
DLS1204 - 151SWE	150	$\pm 20\%$	1V / 100K	520	0,95
DLS1204 - 181SWE	180	$\pm 20\%$	1V / 100K	600	0,85
DLS1204 - 221SWE	220	$\pm 20\%$	1V / 100K	700	0,8
DLS1204 - 271SWE	270	$\pm 20\%$	1V / 100K	860	0,6
DLS1204 - 331SWE	330	$\pm 20\%$	1V / 100K	980	0,5

NOTE : Specifications subject to change without notice. Please check our website for latest information