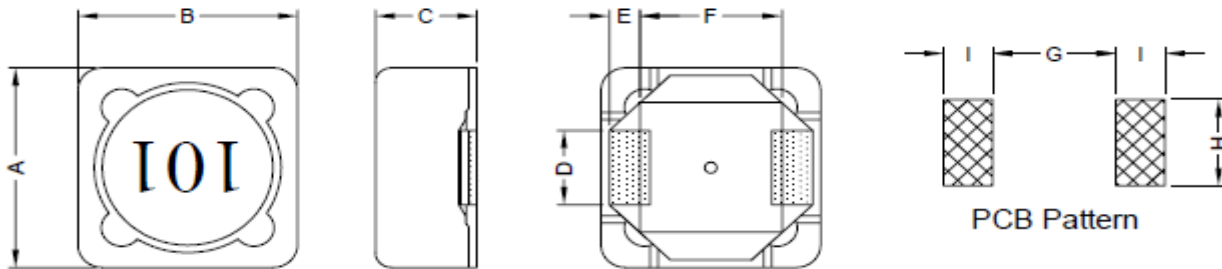


SMD POWER INDUCTORS

SERIE: DLS1207 12,5 x 12,5 x 8,0 mm

DIMENSIONS:

VPE: 400pcs. reel
500pcs. reel



Unit: mm

A	B	C	D	E	F	G	H	I
12,5 ± 0,5	12,5 ± 0,5	8,0 Max	5,0 ± 0,2	2,2 ± 0,2	7,6 ± 0,2	7,0 Ref.	5,4 Ref.	2,8 Ref.

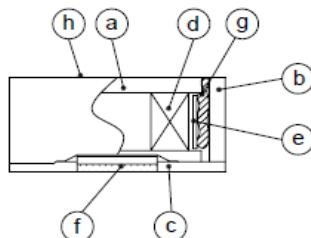
SCHEMATIC:



GENERAL SPECIFICATION :

- 1- Temp. rise: 45°C Max.
- 2- Rated current: Base on temp. rise & $\Delta L/LOA = 20\%$ Max
- 3- Operating temp.: -20°C to + 80°C
- 4- Storage temp.: -40°C to + 125°C
- 5- Resistance to solder heat : 260°C 10sec.

Materials :



- (a) Core : DR Ferrite Core
- (b) Core : SI Ferrite Core
- (c) Base : LCP
- (d) Wire : Enamelled Copper Wire
- (e) Tape : Mylar Tape
- (f) Terminal : Tinned Copper Plate
- (g) Adhesive : Epoxy
- (h) Ink : Bon Margue

NOTE : Specifications subject to change without notice. Please check our website for latest information

SMD POWER INDUCTORS

SERIE: DLS1207 12,5 x 12,5 x 8,0 mm



ELECTRICAL CHARACTERISTICS:

Part No.	Inductance (μ H)		Test Frequency (Hz.)	RDC (m Ω) Max	IDC (A)
DLS1207 - 1R2SWE	1,2	$\pm 30\%$	1V / 100K	7	9,8
DLS1207 - 2R7SWE	2,7	$\pm 30\%$	1V / 100K	11,5	8
DLS1207 - 3R9SWE	3,9	$\pm 30\%$	1V / 100K	13,5	7,5
DLS1207 - 4R7SWE	4,7	$\pm 30\%$	1V / 100K	15,8	6,8
DLS1207 - 5R6SWE	5,6	$\pm 20\%$	1V / 100K	17,6	6,6
DLS1207 - 7R6SWE	7,6	$\pm 20\%$	1V / 100K	20	5,9
DLS1207 - 100SWE	10	$\pm 20\%$	1V / 100K	21,6	5,4
DLS1207 - 120SWE	12	$\pm 20\%$	1V / 1K	24,3	4,9
DLS1207 - 150SWE	15	$\pm 20\%$	1V / 1K	27	4,5
DLS1207 - 180SWE	18	$\pm 20\%$	1V / 1K	39,2	3,9
DLS1207 - 220SWE	22	$\pm 20\%$	1V / 1K	43,2	3,6
DLS1207 - 270SWE	27	$\pm 20\%$	1V / 1K	45,9	3,4
DLS1207 - 330SWE	33	$\pm 20\%$	1V / 1K	64,8	3
DLS1207 - 390SWE	39	$\pm 20\%$	1V / 1K	72,9	2,75
DLS1207 - 470SWE	47	$\pm 20\%$	1V / 1K	100	2,5
DLS1207 - 560SWE	56	$\pm 20\%$	1V / 1K	110	2,35
DLS1207 - 680SWE	68	$\pm 20\%$	1V / 1K	140	2,1
DLS1207 - 820SWE	82	$\pm 20\%$	1V / 1K	160	1,95
DLS1207 - 101SWE	100	$\pm 20\%$	1V / 1K	220	1,7
DLS1207 - 121SWE	120	$\pm 20\%$	1V / 1K	250	1,6
DLS1207 - 151SWE	150	$\pm 20\%$	1V / 1K	280	1,42
DLS1207 - 181SWE	180	$\pm 20\%$	1V / 1K	350	1,3
DLS1207 - 221SWE	220	$\pm 20\%$	1V / 1K	390	1,16
DLS1207 - 271SWE	270	$\pm 20\%$	1V / 1K	560	1,06
DLS1207 - 331SWE	330	$\pm 20\%$	1V / 1K	640	0,95
DLS1207 - 391SWE	390	$\pm 20\%$	1V / 1K	700	0,88
DLS1207 - 471SWE	470	$\pm 20\%$	1V / 1K	980	0,79
DLS1207 - 561SWE	560	$\pm 20\%$	1V / 1K	1070	0,73
DLS1207 - 681SWE	680	$\pm 20\%$	1V / 1K	1460	0,67

NOTE : Specifications subject to change without notice. Please check our website for latest information

SMD POWER INDUCTORS

SERIE: DLS1207 12,5 x 12,5 x 8,0 mm



ELECTRICAL CHARACTERISTICS:

Part No.	Inductance (μ H)		Test Frequency (Hz.)	RDC (m Ω) Max	IDC (A)
DLS1207 - 821SWE	820	\pm 20%	1V / 100K	1640	0,6
DLS1207 - 102SWE	1000	\pm 20%	1V / 100K	1820	0,55

NOTE : Specifications subject to change without notice. Please check our website for latest information