

SMD POWER INDUCTORS

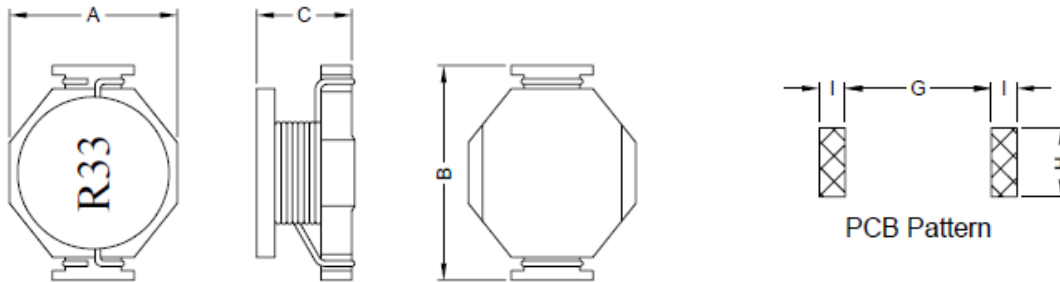
SERIE: HLC3316 6,35 x 13,5 x 9,91 mm

DIMENSIONS:

VPE: 600 pcs.



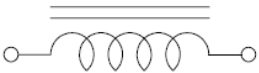
RoHS Compliant



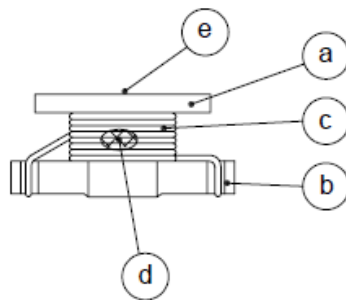
Unit:mm

A	B	C	G	H	I
9,91 Max.	13,50 Max.	6,35 Max.	8,64 Ref.	4,06 Ref.	1,52 Ref.

SCHEMATIC:



MATERIALS :



- (a) Core : DR Ferrite Core
- (b) Base : Phenolic
- (c) Wire : Enamelled Copper Wire
- (d) Adhesive : Epoxy
- (e) Ink : Bon Margue

GENERAL SPECIFICATION :

1. Temp. rise: 40°C Max.
2. Isat: $\Delta L/L0A = 10\%$ Typ.
3. Storage temp.: -40°C to + 85°C
4. Operating temp.: -40°C to + 85°C
5. Resistance to solder heat : 260°C 10sec.

NOTE : Specifications subject to change without notice. Please check our website for latest information

SMD POWER INDUCTORS

SERIE: HLC3316 6,35 x 13,5 x 9,91 mm



ELECTRICAL CHARACTERISTICS

Part No.	Inductance (μH) $\pm 20\%$	Test Frequency (Hz.)	SRF (MHz.) Typ.	Rdc (m Ω)	Irms (A)	Isat (A)
HLC3316 - R33SWE	0,33	0,1V/100K	300	2	16	20
HLC3316 - R68SWE	0,68	0,1V/100K	200	5	12	13
HLC3316 - 1R0SWE	1,00	0,1V/100K	100	6	10	11
HLC3316 - 1R5SWE	1,50	0,1V/100K	90	8	9	9
HLC3316 - 2R2SWE	2,20	0,1V/100K	90	11	7,4	7,8
HLC3316 - 2R7SWE	2,70	0,1V/100K	65	12	6,6	7
HLC3316 - 3R3SWE	3,30	0,1V/100K	65	14	5,9	6,4
HLC3316 - 4R7SWE	4,70	0,1V/100K	45	18	4,8	5,4
HLC3316 - 5R6SWE	5,60	0,1V/100K	40	22	4,6	5
HLC3316 - 6R8SWE	6,80	0,1V/100K	36	27	4,4	4,6
HLC3316 - 8R2SWE	8,20	0,1V/100K	28	32	4	4
HLC3316 - 101SWE	10,0	0,1V/100K	25	38	3,9	3,8

NOTE : Specifications subject to change without notice. Please check our website for latest information