

# SMD POWER INDUCTORS

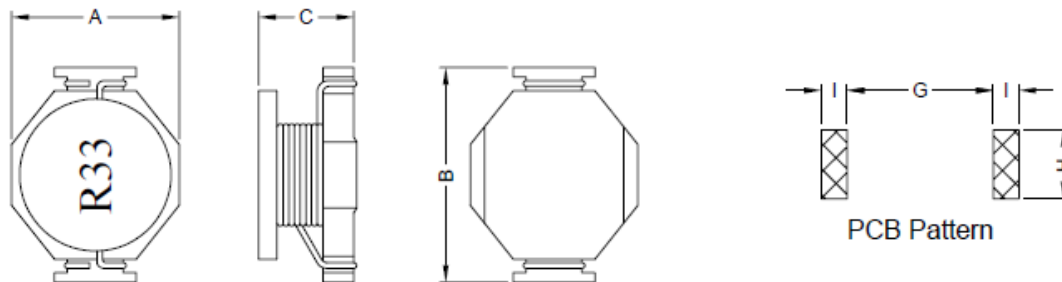
**SERIE:** HLC5022 8,0 x 22,35 x 16,26 mm

## DIMENSIONS:

VPE: 250 pcs.



RoHS Compliant



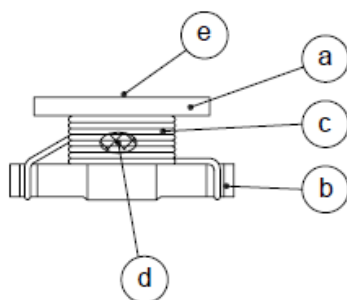
Unit:mm

A	B	C	G	H	I
16,26 Max.	22,35 Max.	8,0 Max.	14,35 Ref.	8,64 Ref.	3,18 Ref.

## SCHEMATIC:



## MATERIALS :



- (a) Core : DR Ferrite Core
- (b) Base : Phenolic
- (c) Wire : Enamelled Copper Wire
- (d) Adhesive : Epoxy
- (e) Ink : Bon Margue

## GENERAL SPECIFICATION :

1. Temp. rise: 40°C Max.
2. Isat:  $\Delta L/L0A = 10\%$  Typ.
3. Storage temp.: -40°C to + 85°C
4. Operating temp.: -40°C to + 85°C
5. Resistance to solder heat : 260°C 10sec.

*NOTE : Specifications subject to change without notice. Please check our website for latest information*

# SMD POWER INDUCTORS

**SERIE:** HLC5022 8,0 x 22,35 x 16,26 mm



COILS ■ ELEKTRONIK ■ TRANSFORMERS

## ELECTRICAL CHARACTERISTICS

Part No.	Inductance ( $\mu$ H) $\pm$ 20%	Test Frequency ( Hz. )	SRF ( MHz. ) Typ.	Rdc ( m $\Omega$ )	Irms ( A )	Isat ( A )
HLC5022 - R78SWE	0,78	0,1V/100K	156	2,6	15	30
HLC5022 - 1R5SWE	1,50	0,1V/100K	100	4	15	25
HLC5022 - 2R2SWE	2,20	0,1V/100K	75	6,1	12	20
HLC5022 - 3R3SWE	3,30	0,1V/100K	60	8,6	10	17
HLC5022 - 3R9SWE	3,90	0,1V/100K	55	10	9	15
HLC5022 - 4R7SWE	4,70	0,1V/100K	40	14	8,4	13
HLC5022 - 6R0SWE	6,00	0,1V/100K	35	17	7,5	12
HLC5022 - 7R8SWE	7,80	0,1V/100K	35	18	7,5	11
HLC5022 - 100SWE	10,0	0,1V/100K	28	26	6	10
HLC5022 - 150SWE	15,0	0,1V/100K	20	32	4,4	8

NOTE : Specifications subject to change without notice. Please check our website for latest information