

SMD POWER INDUCTORS

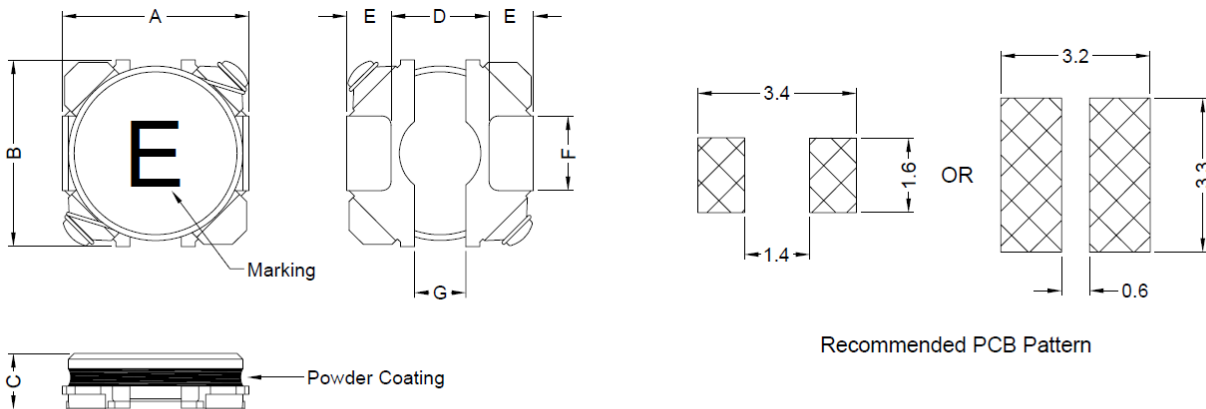
SERIE: PCF3012 3,0 x 2,9 x 1,2 mm

DIMENSIONS:

VPE: 3000 pcs.



RoHS Compliant



Recommended PCB Pattern

Unit:m/m

A	B	C	D	E	F	G
3.0±0.2	2.9±0.2	1.2 Max.	1.5 Typ.	0.76 Typ.	1.2 Typ.	0.7 Typ.

SCHEMATIC:



MATERIALS:

Core: Ferrite

GENERAL SPECIFICATION :

1. IDC1: Based on inductance change ($\Delta L/L_{0A}$: $\leq 30\%$) @ ambient temp. 25°C
2. IDC2: Based on temperature rise (ΔT : 40°C Typ.)
3. Rated Current: IDC1 or IDC2, whichever value is lower
4. Storage temp. : -40°C.....+105°C
5. Operating temp.: -40°C.....+105°C (include self temp. rise)
6. Resistance to solder heat : 260°C 10sec.

NOTE : Specifications subject to change without notice. Please check our website for latest information

SMD POWER INDUCTORS

SERIE: PCF3012 3,0 x 2,9 x 1,2 mm



ELECTRICAL CHARACTERISTICS

Part. No.	Inductance (uH)		Test Frequency (Hz)	RDC (mΩ) ± 20%	IDC (A)	IDC (2)	Marking
-----------	-----------------	--	----------------------	------------------	---------	---------	---------

PCF3012 - R56SWE	0,56	30%	0,1V / 100K	38	2,50	1,95	7
PCF3012 - R68SWE	0,68	30%	0,1V / 100K	44	2,10	1,85	8
PCF3012 - 1R0SWE	1,0	30%	0,1V / 100K	53	1,90	1,70	A
PCF3012 - 1R2SWE	1,2	30%	0,1V / 100K	53	1,90	1,70	B
PCF3012 - 1R5SWE	1,5	30%	0,1V / 100K	67	1,70	1,55	C
PCF3012 - 2R2SWE	2,2	30%	0,1V / 100K	93	1,30	1,40	E
PCF3012 - 3R3SWE	3,3	30%	0,1V / 100K	130	1,10	1,20	G
PCF3012 - 4R7SWE	4,7	20%	0,1V / 100K	190	0,95	0,95	I
PCF3012 - 5R6SWE	5,6	20%	0,1V / 100K	220	0,83	0,85	J
PCF3012 - 6R8SWE	6,8	20%	0,1V / 100K	260	0,80	0,80	K
PCF3012 - 100SWE	10	20%	0,1V / 100K	360	0,63	0,67	M
PCF3012 - 150SWE	15	20%	0,1V / 100K	530	0,55	0,56	O
PCF3012 - 220SWE	22	20%	0,1V / 100K	790	0,45	0,41	Q
PCF3012 - 330SWE	33	20%	0,1V / 100K	1140	0,36	0,31	S
PCF3012 - 470SWE	47	20%	0,1V / 100K	1530	0,30	0,22	U

NOTE : Specifications subject to change without notice. Please check our website for latest information.