

# SMD POWER INDUCTORS

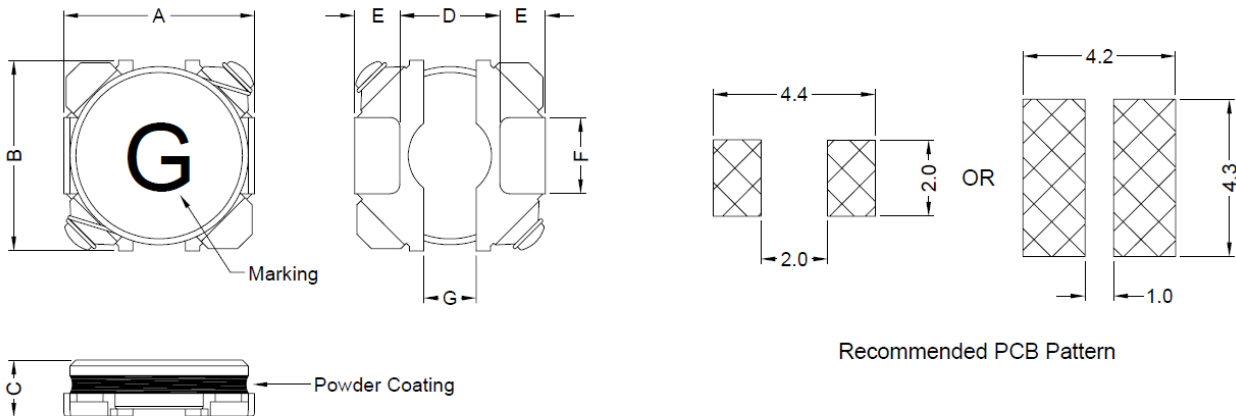
**SERIE:** PCF4018 4,0 x 3,9 x 1,8 mm

## DIMENSIONS:

VPE: 3000 pcs.



RoHS Compliant



Unit:m/m

| A       | B       | C        | D       | E        | F       | G       |
|---------|---------|----------|---------|----------|---------|---------|
| 4.0±0.2 | 3.9±0.2 | 1.8 Max. | 2.1 Typ | 0.96 Typ | 1.6 Typ | 1.1 Typ |

## SCHEMATIC:



## MATERIALS:

Core: Ferrite

## GENERAL SPECIFICATION :

1. IDC1: Based on inductance change ( $\Delta L/L0A : \leq 30\%$ ) @ ambient temp. 25°C
2. IDC2: Based on temperature rise ( $\Delta T: 40^\circ\text{C Typ.}$ )
3. Rated Current: IDC1 or IDC2, whichever value is lower
4. Storage temp. : -40°C.....+105°C
5. Operating temp.: -40°C.....+105°C ( include self temp. rise )
6. Resistance to solder heat : 260°C 10sec.

*NOTE : Specifications subject to change without notice. Please check our website for latest information*

# SMD POWER INDUCTORS

**SERIE:** PCF4018 4,0 x 3,9 x 1,8 mm



## ELECTRICAL CHARACTERISTICS

| Part. No. | Inductance (uH) |  | Test Frequency ( Hz) | RDC ( mΩ ) ± 20% | IDC (A) | IDC (2) | Marking |
|-----------|-----------------|--|----------------------|------------------|---------|---------|---------|
|-----------|-----------------|--|----------------------|------------------|---------|---------|---------|

|                  |     |     |             |      |      |      |   |
|------------------|-----|-----|-------------|------|------|------|---|
| PCF4018 - 1R0SWE | 1,0 | 30% | 0,1V / 100K | 50   | 4,70 | 1,85 | A |
| PCF4018 - 1R5SWE | 1,5 | 30% | 0,1V / 100K | 60   | 3,70 | 1,70 | C |
| PCF4018 - 1R8SWE | 1,8 | 30% | 0,1V / 100K | 65   | 3,40 | 1,65 | D |
| PCF4018 - 2R2SWE | 2,2 | 30% | 0,1V / 100K | 74   | 3,20 | 1,60 | E |
| PCF4018 - 3R3SWE | 3,3 | 30% | 0,1V / 100K | 97   | 2,70 | 1,45 | G |
| PCF4018 - 4R7SWE | 4,7 | 20% | 0,1V / 100K | 120  | 2,20 | 1,30 | I |
| PCF4018 - 6R8SWE | 6,8 | 20% | 0,1V / 100K | 170  | 1,80 | 1,15 | K |
| PCF4018 - 100SWE | 10  | 20% | 0,1V / 100K | 240  | 1,50 | 1,00 | M |
| PCF4018 - 220SWE | 22  | 20% | 0,1V / 100K | 490  | 1,00 | 0,63 | Q |
| PCF4018 - 470SWE | 47  | 20% | 0,1V / 100K | 1170 | 0,75 | 0,49 | U |
| PCF4018 - 101SWE | 100 | 20% | 0,1V / 100K | 2170 | 0,45 | 0,28 | Y |

*NOTE : Specifications subject to change without notice. Please check our website for latest information.*