

SMD POWER INDUCTORS

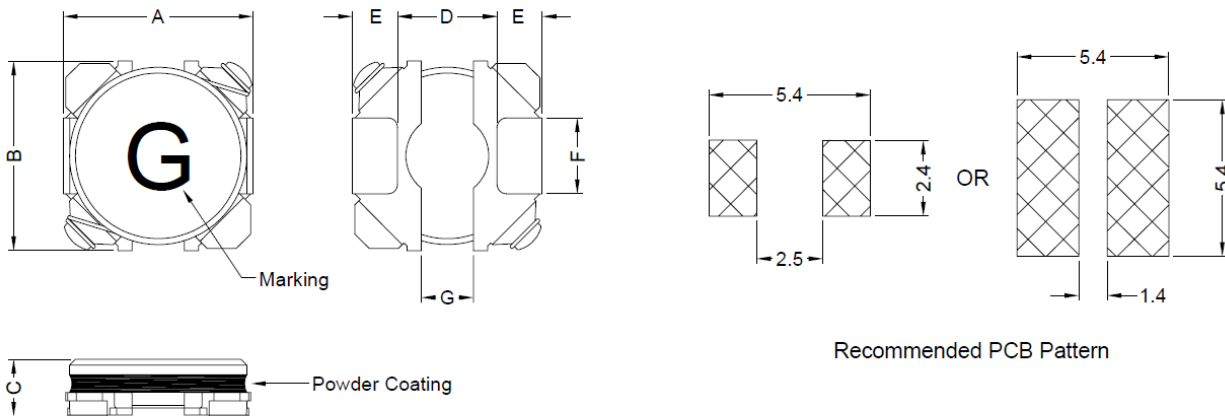
SERIE: PCF5010 5,0 x 4,9 x 1,0 mm

DIMENSIONS:

VPE: 3000 pcs.



RoHS Compliant



Unit:m/m

A	B	C	D	E	F	G
5.0±0.2	4.9±0.2	1.0 Max.	2.7 Typ	1.16 Typ	2.0 Typ	1.5 Typ

SCHEMATIC:



MATERIALS:

Core: Ferrite

GENERAL SPECIFICATION :

1. IDC1: Based on inductance change ($\Delta L/L0A : \leq 30\%$) @ ambient temp. 25°C
2. IDC2: Based on temperature rise ($\Delta T: 40^\circ\text{C Typ.}$)
3. Rated Current: IDC1 or IDC2, whichever value is lower
4. Storage temp. : -40°C.....+105°C
5. Operating temp.: -40°C.....+105°C (include self temp. rise)
6. Resistance to solder heat : 260°C 10sec.

NOTE : Specifications subject to change without notice. Please check our website for latest information

SMD POWER INDUCTORS

SERIE: PCF5010 5,0 x 4,9 x 1,0 mm



ELECTRICAL CHARACTERISTICS

Part. No.	Inductance (uH)		Test Frequency (Hz)	RDC (mΩ) ± 20%	IDC (A)	IDC (2)	Marking
-----------	-----------------	--	----------------------	------------------	---------	---------	---------

PCF5010 - 1R0SWE	1,0	30%	0,1V / 100K	59	1,80	1,90	A
PCF5010 - 1R5SWE	1,5	30%	0,1V / 100K	75	1,50	1,70	C
PCF5010 - 2R2SWE	2,2	30%	0,1V / 100K	90	1,20	1,60	E
PCF5010 - 3R3SWE	3,3	30%	0,1V / 100K	120	1,05	1,45	G
PCF5010 - 4R7SWE	4,7	20%	0,1V / 100K	140	0,80	1,35	I
PCF5010 - 6R8SWE	6,8	20%	0,1V / 100K	180	0,70	1,20	K
PCF5010 - 100SWE	10,0	20%	0,1V / 100K	220	0,65	1,10	M
PCF5010 - 150SWE	15,0	20%	0,1V / 100K	310	0,53	0,93	O
PCF5010 - 220SWE	22,0	20%	0,1V / 100K	450	0,47	0,75	Q
PCF5010 - 330SWE	33,0	20%	0,1V / 100K	680	0,35	0,57	S
PCF5010 - 470SWE	47,0	20%	0,1V / 100K	1100	0,30	0,45	U
PCF5010 - 101SWE	100,0	20%	0,1V / 100K	2460	0,33	0,38	Y

NOTE : Specifications subject to change without notice. Please check our website for latest information.