

SMD POWER INDUCTORS

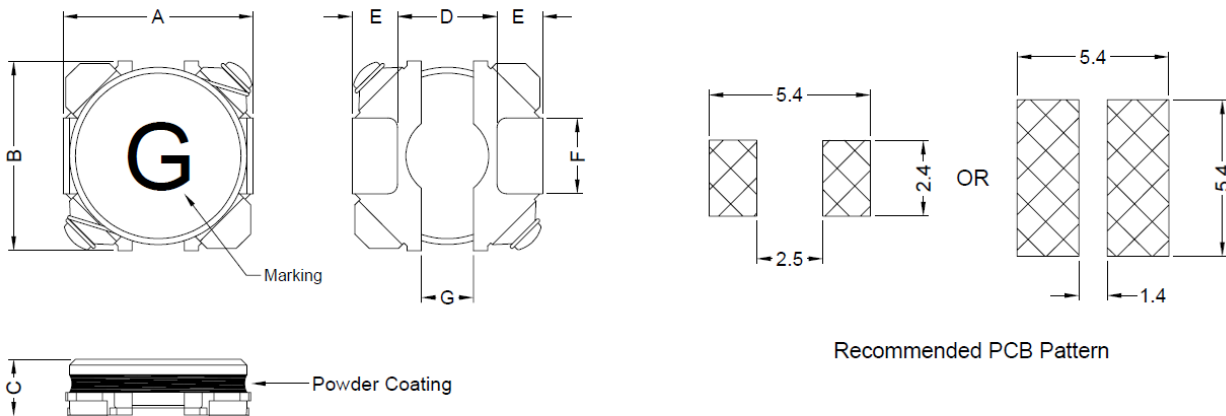
SERIE: PCF5012 5,0 x 4,9 x 1,2 mm

DIMENSIONS:

VPE: 3000 pcs.



RoHS Compliant



Unit:m/m

A	B	C	D	E	F	G
5.0±0.2	4.9±0.2	1.2 Max.	2.7 Typ	1.16 Typ	2.0 Typ	1.5 Typ

SCHEMATIC:



MATERIALS:

Core: Ferrite

GENERAL SPECIFICATION :

1. IDC1: Based on inductance change ($\Delta L/L_{0A}$: $\leq 30\%$) @ ambient temp. 25°C
2. IDC2: Based on temperature rise (ΔT : 40°C Typ.)
3. Rated Current: IDC1 or IDC2, whichever value is lower
4. Storage temp. : -40°C.....+105°C
5. Operating temp.: -40°C.....+105°C (include self temp. rise)
6. Resistance to solder heat : 260°C 10sec.

NOTE : Specifications subject to change without notice. Please check our website for latest information

SMD POWER INDUCTORS

SERIE: PCF5012 5,0 x 4,9 x 1,2 mm



ELECTRICAL CHARACTERISTICS

Part. No.	Inductance (uH)		Test Frequency (Hz)	RDC (mΩ) ± 20%	IDC (A)	IDC (2)	Marking
-----------	-----------------	--	----------------------	------------------	---------	---------	---------

PCF5012 - 1R0SWE	1,0	30%	0,1V / 100K	39	2,50	2,20	A
PCF5012 - 1R5SWE	1,5	30%	0,1V / 100K	49	2,10	2,05	C
PCF5012 - 2R2SWE	2,2	30%	0,1V / 100K	72	1,90	1,80	E
PCF5012 - 3R3SWE	3,3	30%	0,1V / 100K	83	1,60	1,65	G
PCF5012 - 4R7SWE	4,7	20%	0,1V / 100K	130	1,40	1,40	I
PCF5012 - 5R6SWE	5,6	20%	0,1V / 100K	140	1,20	1,35	J
PCF5012 - 6R8SWE	6,8	20%	0,1V / 100K	160	1,10	1,25	K
PCF5012 - 100SWE	10,0	20%	0,1V / 100K	250	0,90	1,05	M
PCF5012 - 150SWE	15,0	20%	0,1V / 100K	280	0,70	0,95	O

NOTE : Specifications subject to change without notice. Please check our website for latest information.