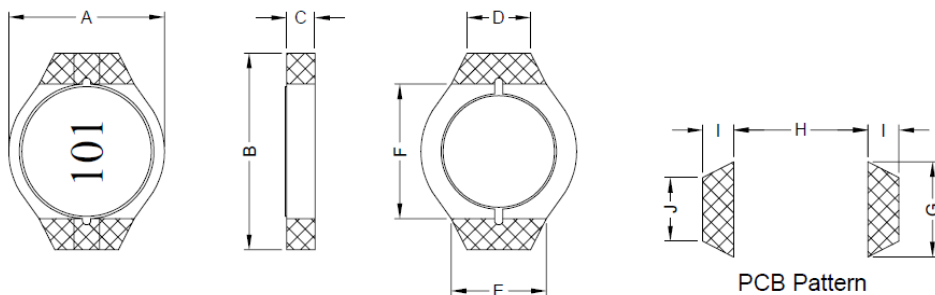


# HIGH CURRENT POWER INDUCTORS

**SERIE:** PTK1704 5,5 x 6,6 x 1,0 mm

## DIMENSIONS:

VPE: 1000pcs.



Unit:m/m

A	B	C	D	E	F	G	H	I	J
5.50 Max.	6.60 Max.	1.00 Max.	2.50±0.2	3.40±0.3	4.90±0.3	3.80 Ref.	4.70 Ref.	1.10 Ref.	2.50 Ref.

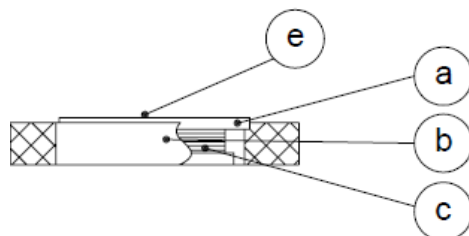
## SCHEMATIC:



## GENERAL SPECIFICATION :

- 1- Temp.rise : 40°C Max. at Irms.
- 2-  $\Delta L/L_0 = 10\%$  Max. at Isat
- 3- Storage temp. : -40°C to 125°C
- 4- Operating temp.: - 40°C to + 85°C
- 5- Resistance to solder heat: 260°C . 10sec.

## MATERIALS:



- (a) Core : DR Ferrite Core
- (b) Base : Ceramic Base
- (c) Wire : Enamelled Copper Wire
- (d) Adhesive : Epoxy
- (e) Ink : Bon Margue

*NOTE : Specifications subject to change without notice. Please check our website for latest information.*

## HIGH CURRENT POWER INDUCTORS

**SERIE:** PTK1704 5,5 x 6,6 x 1,0 mm



### ELECTRICAL CHARACTERISTICS:

Part No.	L ( $\mu$ H)	Tolerance	Test Frequency (Hz)	SRF ( MHz ) Typ.	RDC ( $\Omega$ ) Max	Isat ( A ) Max.	Irms ( A ) Max.
<b>PTK1704 - 1R2</b>	1,2	20%	0,1V / 100K	190	0,08	2,10	1,70
<b>PTK1704 - 1R5</b>	1,5	20%	0,1V / 100K	140	0,10	1,90	1,50
<b>PTK1704 - 2R2</b>	2,2	20%	0,1V / 100K	115	0,12	1,60	1,40
<b>PTK1704 - 3R3</b>	3,3	20%	0,1V / 100K	90	0,16	1,30	1,20
<b>PTK1704 - 4R7</b>	4,7	20%	0,1V / 100K	88	0,20	1,10	1,10
<b>PTK1704 - 6R8</b>	6,8	20%	0,1V / 100K	66	0,32	0,90	0,85
<b>PTK1704 - 100</b>	10	20%	0,1V / 100K	55	0,41	0,80	0,75
<b>PTK1704 - 150</b>	15	20%	0,1V / 100K	42	0,55	0,65	0,60
<b>PTK1704 - 220</b>	22	20%	0,1V / 100K	38	0,85	0,50	0,52
<b>PTK1704 - 330</b>	33	20%	0,1V / 100K	29	1,30	0,40	0,42
<b>PTK1704 - 470</b>	47	20%	0,1V / 100K	22	1,80	0,35	0,36
<b>PTK1704 - 680</b>	68	20%	0,1V / 100K	18	2,50	0,30	0,30
<b>PTK1704 - 101</b>	100	20%	0,1V / 100K	14	3,50	0,25	0,26
<b>PTK1704 - 151</b>	150	20%	0,1V / 100K	12	5,00	0,18	0,21
<b>PTK1704 - 221</b>	220	20%	0,1V / 100K	10	7,00	0,16	0,18
<b>PTK1704 - 331</b>	330	20%	0,1V / 100K	8	15,00	0,13	0,13

*NOTE : Specifications subject to change without notice. Please check our website for latest information.*