

# RADIAL CHOKE COIL

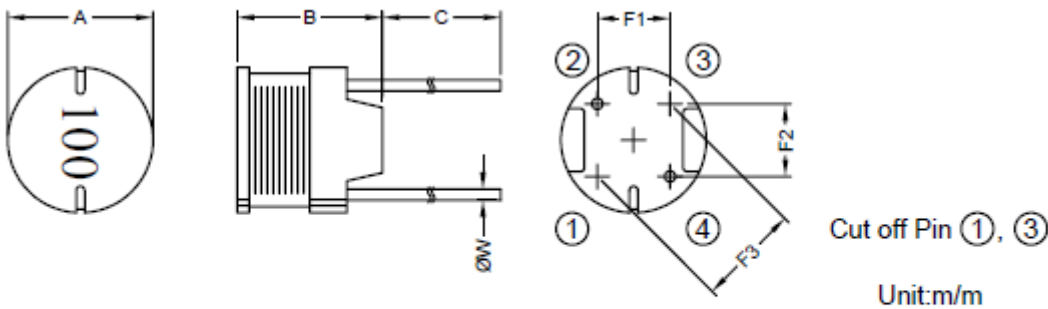
**SERIE:** REP1008 10,0 x 8,0 mm

## DIMENSIONS:

VPE: 200 Box



RoHS Compliant



Unit:m/m

A	B	C	F1	F2	F3	ØW
10.00±0.5	8.00±0.5	15.00±3.0	4.00±0.5	5.00±0.5	6.40±0.5	0.65±0.10

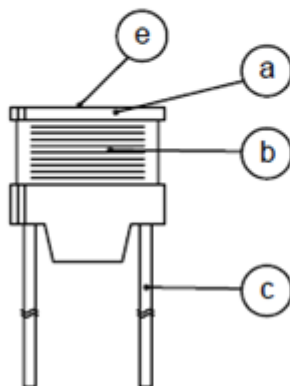
## SCHEMATIC:



## GENERAL SPECIFICATION :

1. The inductance drop at rated is 10% max.
2. Temp. rise. 40°C max. at rated current.
3. Storage temp.: -40°C.....+105°C
4. Operating temp.: -40°C..... +85°C

## MATERIALS:



- (a) Core : DR Ferrite Core
- (b) Wire : Enamelled Copper Wire
- (c) Lead : Tinned Copper Wire
- (d) Adhesive : Epoxy
- (e) Ink : Bon Margue

*NOTE : Specifications subject to change without notice. Please check our website for latest information*

# RADIAL CHOKE COIL

**SERIE:** REP1008 10,0 x 8,0 mm



## ELECTRICAL CHARACTERISTICS

Part. No.	Inductance (uH)		Test Frequency ( Hz)	RDC ( Ω )	IDC ( A)
-----------	-----------------	--	----------------------	-----------	----------

REP1008 - 100SWE	10	10%	2,52M	0,027	4,50
REP1008 - 120SWE	12	10%	2,52M	0,031	4,10
REP1008 - 150SWE	15	10%	2,52M	0,036	3,70
REP1008 - 180SWE	18	10%	2,52M	0,049	3,40
REP1008 - 220SWE	22	10%	2,52M	0,055	3,10
REP1008 - 270SWE	27	10%	2,52M	0,062	2,80
REP1008 - 330SWE	33	10%	2,52M	0,079	2,50
REP1008 - 390SWE	39	10%	2,52 M	0,087	2,30
REP1008 - 470SWE	47	10%	2,52 M	0,099	2,10
REP1008 - 560SWE	56	10%	2,52 M	0,13	1,90
REP1008 - 680SWE	68	10%	2,52 M	0,14	1,70
REP1008 - 820SWE	82	10%	2,52 M	0,16	1,60
REP1008 - 101SWE	100	10%	1K	0,21	1,40
REP1008 - 121SWE	120	10%	1K	0,24	1,30
REP1008 - 151SWE	150	10%	1K	0,32	1,20
REP1008 - 181SWE	180	10%	1K	0,35	1,10
REP1008 - 221SWE	220	10%	1K	0,45	0,96
REP1008 - 271SWE	270	10%	1K	0,61	0,87
REP1008 - 331SWE	330	10%	1K	0,69	0,79
REP1008 - 391SWE	390	10%	1K	0,78	0,72
REP1008 - 471SWE	470	10%	1k	1,00	0,66
REP1008 - 561SWE	560	10%	1k	1,20	0,60
REP1008 - 681SWE	680	10%	1k	1,40	0,55
REP1008 - 821SWE	820	10%	1k	1,80	0,50
REP1008- 102SWE	1000	10%	1k	2,10	0,45

NOTE : Specifications subject to change without notice. Please check our website for latest information.