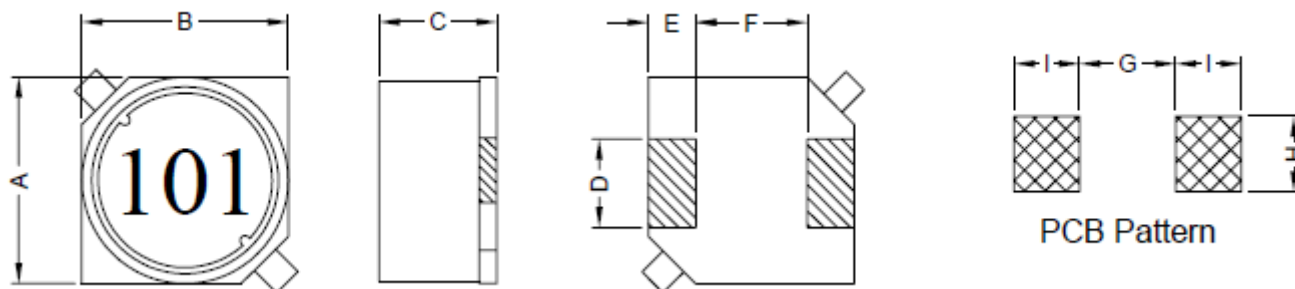


WIREWOUND CHIP SMD INDUCTOR

SERIE: RLS0603 6,0 x 6,0 x 2,9 mm

DIMENSIONS:

VPE: 1000pcs.



Unit:m/m

A	B	C	D	E	F	G	H	I
6.0±0.3	6.0±0.3	2.9±0.3	2.0±0.2	1.5±0.2	3.0±0.2	2.8 Ref.	2.2 Ref.	1.9 Ref.

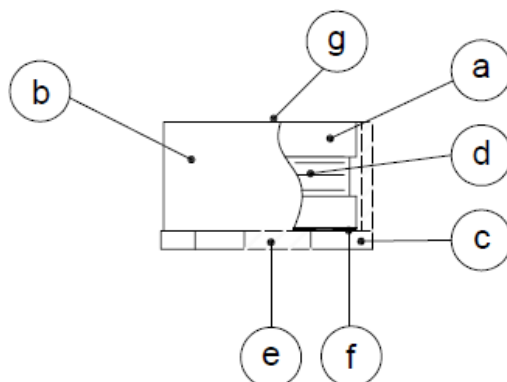
SCHEMATIC:



GENERAL SPECIFICATION :

- 1- Temp. rise: 40°C Max.
- 2- Operating temp. : -40°C to +85°C
- 3- Storage temp. : -40°C to +125°C
- 4- Rated current: Base on temp. rise & $\Delta L/L0A=10\%$ Max.
- 5- Resistance to solder heat: 260°C. 10sec.

MATERIALS:



- (a) Core : DR Ferrite Core
- (b) Core : RI Ferrite Core
- (c) Base : LCP
- (d) Wire : Enamelled Copper Wire
- (e) Terminal : Tinned Copper Plate
- (f) Adhesive : Epoxy
- (g) Ink : Bon Margue

NOTE : Specifications subject to change without notice. Please check our website for latest information.

WIREWOUND CHIP SMD INDUCTOR

SERIE: RLS0603 6,0 x 6,0 x 2,9 mm



ELECTRICAL CHARACTERISTICS:

Part No.	Inductance (uH)	Tolerance	Q	Test Frequency (Hz)	SRF (MHz) Typ.	DCR (mΩ) Max	IDC (A) Max.
RLS0603 - 1R0	1,0	± 20%	30	1V / 100K	190	19	2,40
RLS0603 - 1R5	1,5	± 20%	30	1V / 100K	140	25	2,20
RLS0603 - 2R2	2,2	± 20%	35	1V / 100K	100	32	1,90
RLS0603 - 3R3	3,3	± 20%	35	1V / 100K	85	50	1,50
RLS0603 - 4R7	4,7	± 20%	35	1V / 100K	65	60	1,30
RLS0603 - 6R8	6,8	± 20%	35	1V / 100K	55	70	1,20
RLS0603 - 100	10	± 20%	40	1V / 100K	45	120	1,00
RLS0603 - 120	12	± 20%	40	1V / 100K	40	130	0,90
RLS0603 - 150	15	± 20%	35	1V / 100K	38	150	0,80
RLS0603 - 180	18	± 20%	35	1V / 100K	35	160	0,75
RLS0603 - 220	22	± 20%	40	1V / 100K	26	230	0,65
RLS0603 - 270	27	± 20%	40	1V / 100K	24	250	0,60
RLS0603 - 330	33	± 20%	45	1V / 100K	22	340	0,55
RLS0603 - 390	39	± 20%	45	1V / 100K	20	380	0,52
RLS0603 - 470	47	± 20%	45	1V / 100K	19	420	0,50
RLS0603 - 560	56	± 20%	45	1V / 100K	17	570	0,48
RLS0603 - 680	68	± 20%	50	1V / 100K	14	620	0,45
RLS0603 - 820	82	± 20%	50	1V / 100K	13	900	0,40
RLS0603 - 101	100	± 20%	50	1V / 100K	12	990	0,35
RLS0603 - 121	120	± 20%	50	1V / 100K	11	1150	0,30
RLS0603 - 151	150	± 20%	50	1V / 100K	9,0	1750	0,28
RLS0603 - 181	180	± 20%	55	1V / 100K	8,0	1950	0,26
RLS0603 - 221	220	± 20%	55	1V / 100K	7,5	2200	0,22
RLS0603 - 271	270	± 20%	55	1V / 100K	7,0	2500	0,20
RLS0603 - 331	330	± 20%	55	1V / 100K	6,0	3200	0,18

NOTE : Specifications subject to change without notice. Please check our website for latest information.

WIREWOUND CHIP SMD INDUCTOR

SERIE: RLS0603 6,0 x 6,0 x 2,9 mm



ELECTRICAL CHARACTERISTICS:

Part No.	Inductance (uH)	Tolerance	Q	Test Frequency (Hz)	SRF (MHz) Typ.	DCR (mΩ) Max	IDC (A) Max.
RLS0603 – 391	390	± 20%	55	1V / 100K	5,5	3500	0,17
RLS0603 – 471	470	± 20%	55	1V / 100K	5,0	4950	0,16
RLS0603 – 561	560	± 20%	55	1V / 100K	4,8	5350	0,15
RLS0603 – 681	680	± 20%	55	1V / 100K	4,5	6300	0,14
RLS0603 – 821	820	± 20%	55	1V / 100K	4,0	8200	0,13
RLS0603 - 102	1000	± 20%	55	1V / 100K	3,5	9200	0,12

NOTE : Specifications subject to change without notice. Please check our website for latest information.