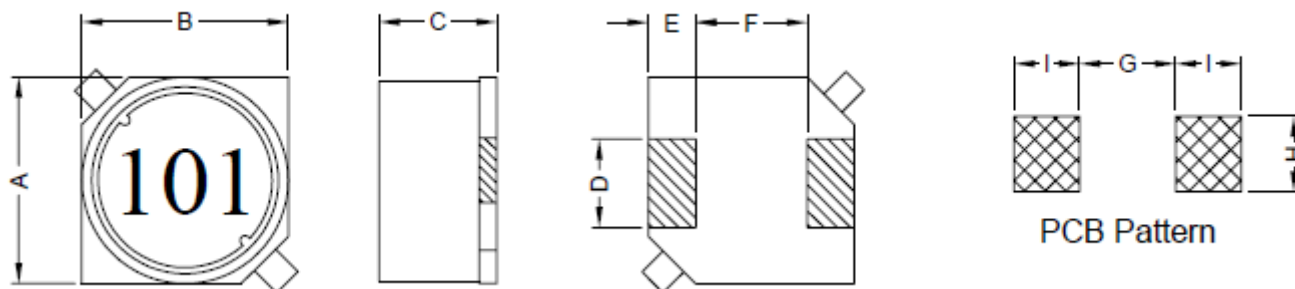


WIREWOUND CHIP SMD INDUCTOR

SERIE: RLS0604 6,0 x 6,0 x 3,9 mm

DIMENSIONS:

VPE: 1000pcs.



Unit:m/mm

A	B	C	D	E	F	G	H	I
6.0±0.3	6.0±0.3	3.9±0.3	2.0±0.2	1.5±0.2	3.0±0.2	2.8 Ref.	2.2 Ref.	1.9 Ref.

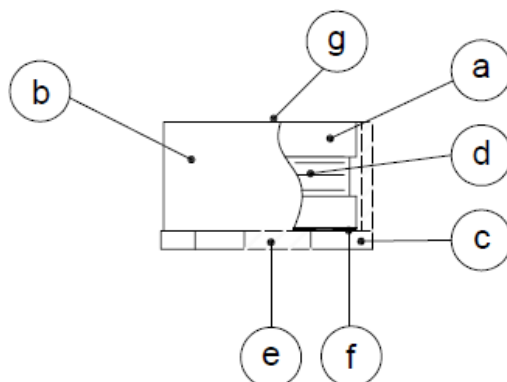
SCHEMATIC:



GENERAL SPECIFICATION :

- 1- Temp. rise: 40°C Max.
- 2- Operating temp. : -40°C to +85°C
- 3- Storage temp. : -40°C to +125°C
- 4- Rated current: Base on temp. rise & $\Delta L/L0A=10\%$ Max.
- 5- Resistance to solder heat: 260°C. 10sec.

MATERIALS:



- (a) Core : DR Ferrite Core
- (b) Core : RI Ferrite Core
- (c) Base : LCP
- (d) Wire : Enamelled Copper Wire
- (e) Terminal : Tinned Copper Plate
- (f) Adhesive : Epoxy
- (g) Ink : Bon Margue

NOTE : Specifications subject to change without notice. Please check our website for latest information.

WIREWOUND CHIP SMD INDUCTOR

SERIE: RLS0604 6,0 x 6,0 x 3,9 mm



ELECTRICAL CHARACTERISTICS:

Part No.	Inductance (uH)	Tolerance	Test Frequency (Hz)	RDC (mΩ) Max	IDC (A) Max.
RLS0604 - 1R0	1,0	± 20%	1V / 100K	22	2,50
RLS0604 - 1R5	1,5	± 20%	1V / 100K	25	2,20
RLS0604 - 2R2	2,2	± 20%	1V / 100K	30	1,90
RLS0604 - 3R3	3,3	± 20%	1V / 100K	35	1,70
RLS0604 - 4R7	4,7	± 20%	1V / 100K	50	1,30
RLS0604 - 6R8	6,8	± 20%	1V / 100K	55	1,10
RLS0604 - 100	10	± 20%	1V / 100K	65	1,00
RLS0604 - 120	12	± 20%	1V / 100K	90	0,90
RLS0604 - 150	15	± 20%	1V / 100K	100	0,80
RLS0604 - 180	18	± 20%	1V / 100K	110	0,70
RLS0604 - 220	22	± 20%	1V / 100K	150	0,65
RLS0604 - 270	27	± 20%	1V / 100K	170	0,60
RLS0604 - 330	33	± 20%	1V / 100K	220	0,55
RLS0604 - 390	39	± 20%	1V / 100K	240	0,50
RLS0604 - 470	47	± 20%	1V / 100K	300	0,47
RLS0604 - 560	56	± 20%	1V / 100K	340	0,42
RLS0604 - 680	68	± 20%	1V / 100K	390	0,40
RLS0604 - 820	82	± 20%	1V / 100K	500	0,35
RLS0604 - 101	100	± 20%	1V / 100K	570	0,32
RLS0604 - 121	120	± 20%	1V / 100K	630	0,30
RLS0604 - 151	150	± 20%	1V / 100K	900	0,27
RLS0604 - 181	180	± 20%	1V / 100K	990	0,25
RLS0604 - 221	220	± 20%	1V / 100K	1150	0,22
RLS0604 - 271	270	± 20%	1V / 100K	1550	0,20
RLS0604 - 331	330	± 20%	1V / 100K	1760	0,18

NOTE : Specifications subject to change without notice. Please check our website for latest information.

WIREWOUND CHIP SMD INDUCTOR

SERIE: RLS0604 6,0 x 6,0 x 3,9 mm



COILS ■ ELEKTRONIK ■ TRANSFORMERS

ELECTRICAL CHARACTERISTICS:

Part No.	Inductance (uH)	Tolerance	Test Frequency (Hz)	DCR (mΩ) Max	IDC (A) Max.
RLS0604 – 391	390	± 20%	1V / 100K	2600	0,17
RLS0604 – 471	470	± 20%	1V / 100K	3000	0,16
RLS0604 – 561	560	± 20%	1V / 100K	3300	0,15
RLS0604 – 681	680	± 20%	1V / 100K	3700	0,13
RLS0604 – 821	820	± 20%	1V / 100K	4900	0,12
RLS0604 – 102	1000	± 20%	1V / 100K	5700	0,11

NOTE : Specifications subject to change without notice. Please check our website for latest information.