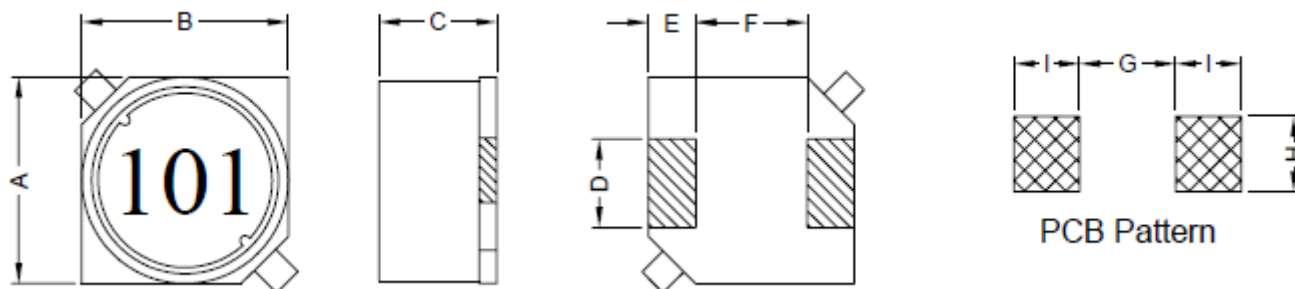


# WIREWOUND CHIP SMD INDUCTOR

**SERIE:** RLS0703 7,0 x 7,0 x 3,0 mm

## DIMENSIONS:

VPE: 1000pcs.



Unit:m/m

A	B	C	D	E	F	G	H	I
6.0±0.3	6.0±0.3	4.9±0.3	2.0±0.2	1.5±0.2	3.0±0.2	2.8 Ref.	2.2 Ref.	1.9 Ref.

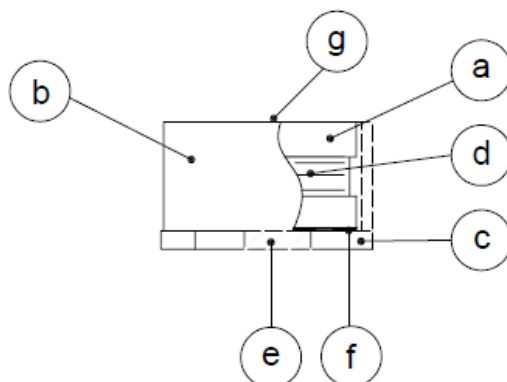
## SCHEMATIC:



## GENERAL SPECIFICATION :

- 1- Temp. rise: 40°C Max.
- 2- Operating temp. : -40°C to +85°C
- 3- Storage temp. : -40°C to +125°C
- 4- Rated current: Base on temp. rise &  $\Delta L/L0A=10\%$  Max.
- 5- Resistance to solder heat: 260°C. 10sec.

## MATERIALS:



- (a) Core : DR Ferrite Core
- (b) Core : RI Ferrite Core
- (c) Base : LCP
- (d) Wire : Enamelled Copper Wire
- (e) Terminal : Tinned Copper Plate
- (f) Adhesive : Epoxy
- (g) Ink : Bon Margue

*NOTE : Specifications subject to change without notice. Please check our website for latest information.*

## WIREWOUND CHIP SMD INDUCTOR

**SERIE:** RLS0703 7,0 x 7,0 x 3,0 mm



### ELECTRICAL CHARACTERISTICS:

Part No.	Inductance (uH)	Tolerance	Test Frequency (Hz)	RDC (mΩ) Max	IDC (A) Max.
RLS0703 - 1R0	1,0	± 20%	1V / 100K	26	3,25
RLS0703 - 1R5	1,5	± 20%	1V / 100K	31	3,00
RLS0703 - 2R2	2,2	± 20%	1V / 100K	37	2,55
RLS0703 - 3R3	3,3	± 20%	1V / 100K	48	2,40
RLS0703 - 4R7	4,7	± 20%	1V / 100K	55	2,10
RLS0703 - 6R8	6,8	± 20%	1V / 100K	75	1,90
RLS0703 - 100	10	± 20%	1V / 100K	100	1,50
RLS0703 - 120	12	± 20%	1V / 100K	120	1,45
RLS0703 - 150	15	± 20%	1V / 100K	130	1,20
RLS0703 - 180	18	± 20%	1V / 100K	160	1,15
RLS0703 - 220	22	± 20%	1V / 100K	190	1,05
RLS0703 - 270	27	± 20%	1V / 100K	240	1,00
RLS0703 - 330	33	± 20%	1V / 100K	300	0,90
RLS0703 - 390	39	± 20%	1V / 100K	340	0,80
RLS0703 - 470	47	± 20%	1V / 100K	400	0,75
RLS0703 - 560	56	± 20%	1V / 100K	550	0,68
RLS0703 - 680	68	± 20%	1V / 100K	650	0,65
RLS0703 - 820	82	± 20%	1V / 100K	720	0,60
RLS0703 - 101	100	± 20%	1V / 100K	820	0,50
RLS0703 - 121	120	± 20%	1V / 100K	1100	0,48
RLS0703 - 151	150	± 20%	1V / 100K	1300	0,45
RLS0703 - 181	180	± 20%	1V / 100K	1500	0,38
RLS0703 - 221	220	± 20%	1V / 100K	2100	0,35
RLS0703 - 271	270	± 20%	1V / 100K	2400	0,30
RLS0703 - 331	330	± 20%	1V / 100K	3100	0,28

NOTE : Specifications subject to change without notice. Please check our website for latest information.

## **WIREWOUND CHIP SMD INDUCTOR**

**SERIE:** RLS0703 7,0 x 7,0 x 3,0 mm



COILS ■ ELEKTRONIK ■ TRANSFORMERS

### **ELECTRICAL CHARACTERISTICS:**

Part No.	Inductance (uH)	Tolerance	Test Frequency (Hz)	DCR (mΩ ) Max	IDC (A) Max.
RLS0703 - 391	390	± 20%	1V / 100K	4100	0,25
RLS0703 - 471	470	± 20%	1V / 100K	4400	0,23
RLS0703 - 561	560	± 20%	1V / 100K	5100	0,20
RLS0703 - 681	680	± 20%	1V / 100K	7100	0,18
RLS0703 - 821	820	± 20%	1V / 100K	7900	0,17
RLS0703 - 102	1000	± 20%	1V / 100K	9000	0,16

*NOTE : Specifications subject to change without notice. Please check our website for latest information.*