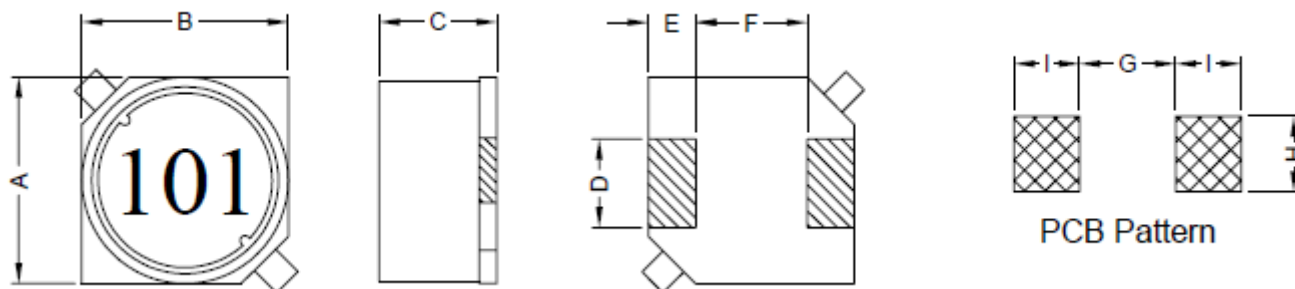


WIREWOUND CHIP SMD INDUCTOR

SERIE: RLS0705 7,0 x 7,0 x 4,60 mm

DIMENSIONS:

VPE: 1000pcs.



Unit:m/m

A	B	C	D	E	F	G	H	I
7.0±0.3	7.0±0.3	4.6±0.3	2.0±0.2	1.5±0.2	4.0±0.2	3.7 Ref.	2.2 Ref.	1.9 Ref.

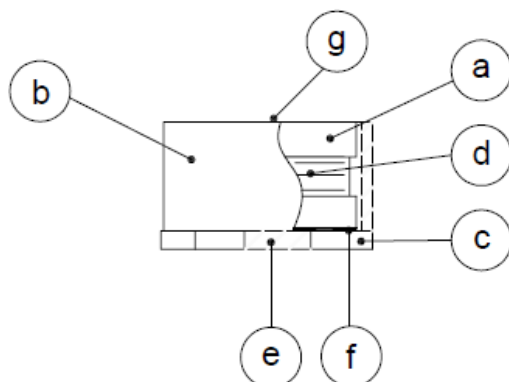
SCHEMATIC:



GENERAL SPECIFICATION :

- 1- Temp. rise: 40°C Max.
- 2- Operating temp. : -40°C to +85°C
- 3- Storage temp. : -40°C to +125°C
- 4- Rated current: Base on temp. rise & $\Delta L/L0A=10\%$ Max.
- 5- Resistance to solder heat: 260°C. 10sec.

MATERIALS:



- (a) Core : DR Ferrite Core
- (b) Core : RI Ferrite Core
- (c) Base : LCP
- (d) Wire : Enamelled Copper Wire
- (e) Terminal : Tinned Copper Plate
- (f) Adhesive : Epoxy
- (g) Ink : Bon Margue

NOTE : Specifications subject to change without notice. Please check our website for latest information.

WIREWOUND CHIP SMD INDUCTOR

SERIE: RLS0705 7,0 x 7,0 x 4,60 mm



ELECTRICAL CHARACTERISTICS:

Part No.	Inductance (uH)	Tolerance	Test Frequency (Hz)	RDC (mΩ) Max	IDC (A) Max.
RLS0705 - 1R0	1,0	± 20%	1V / 100K	20	3,00
RLS0705 - 1R5	1,5	± 20%	1V / 100K	23	2,90
RLS0705 - 2R2	2,2	± 20%	1V / 100K	26	2,70
RLS0705 - 3R3	3,3	± 20%	1V / 100K	30	2,50
RLS0705 - 4R7	4,7	± 20%	1V / 100K	36	2,00
RLS0705 - 6R8	6,8	± 20%	1V / 100K	45	1,90
RLS0705 - 100	10	± 20%	1V / 100K	60	1,70
RLS0705 - 120	12	± 20%	1V / 100K	65	1,55
RLS0705 - 150	15	± 20%	1V / 100K	70	1,45
RLS0705 - 180	18	± 20%	1V / 100K	80	1,20
RLS0705 - 220	22	± 20%	1V / 100K	90	1,15
RLS0705 - 270	27	± 20%	1V / 100K	120	1,00
RLS0705 - 330	33	± 20%	1V / 100K	135	0,90
RLS0705 - 390	39	± 20%	1V / 100K	150	0,85
RLS0705 - 470	47	± 20%	1V / 100K	170	0,80
RLS0705 - 560	56	± 20%	1V / 100K	230	0,70
RLS0705 - 680	68	± 20%	1V / 100K	270	0,65
RLS0705 - 820	82	± 20%	1V / 100K	300	0,57
RLS0705 - 101	100	± 20%	1V / 100K	360	0,50
RLS0705 - 121	120	± 20%	1V / 100K	400	0,47
RLS0705 - 151	150	± 20%	1V / 100K	530	0,40
RLS0705 - 181	180	± 20%	1V / 100K	600	0,38
RLS0705 - 221	220	± 20%	1V / 100K	800	0,35
RLS0705 - 271	270	± 20%	1V / 100K	900	0,32
RLS0705 - 331	330	± 20%	1V / 100K	1000	0,30

NOTE : Specifications subject to change without notice. Please check our website for latest information.

WIREWOUND CHIP SMD INDUCTOR

SERIE: RLS0705 7,0 x 7,0 x 4,60 mm



ELECTRICAL CHARACTERISTICS:

Part No.	Inductance (uH)	Tolerance	Test Frequency (Hz)	DCR (mΩ) Max	IDC (A) Max.
RLS0705 - 391	390	± 20%	1V / 100K	1400	0,27
RLS0705 - 471	470	± 20%	1V / 100K	1600	0,25
RLS0705 - 561	560	± 20%	1V / 100K	1750	0,22
RLS0705 - 681	680	± 20%	1V / 100K	2500	0,20
RLS0705 - 821	820	± 20%	1V / 100K	2800	0,19
RLS0705 - 102	1000	± 20%	1V / 100K	3200	0,18

NOTE : Specifications subject to change without notice. Please check our website for latest information.