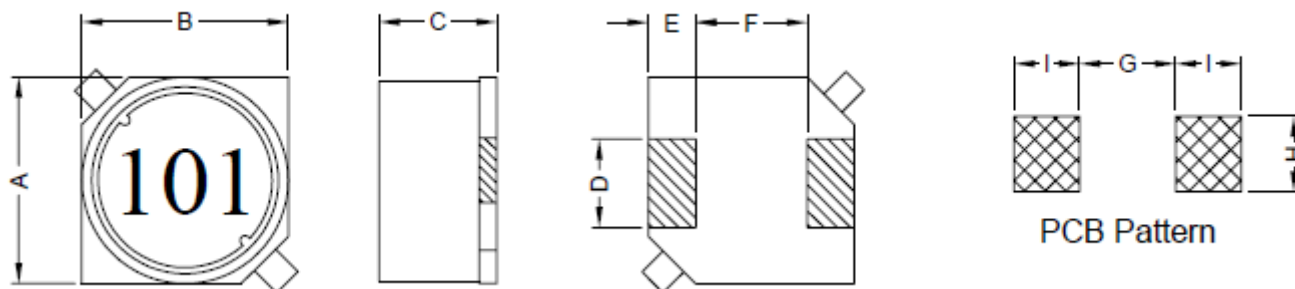


WIREWOUND CHIP SMD INDUCTOR

SERIE: RLS1003 10,0 x 10,0 x 3,0 mm

DIMENSIONS:

VPE: 1000pcs.



Unit:m/m

A	B	C	D	E	F	G	H	I
10.0±0.3	10.0±0.3	3.0±0.3	2.4±0.2	2.0±0.2	6.0±0.2	5.7 Ref.	2.8 Ref.	2.5 Ref.

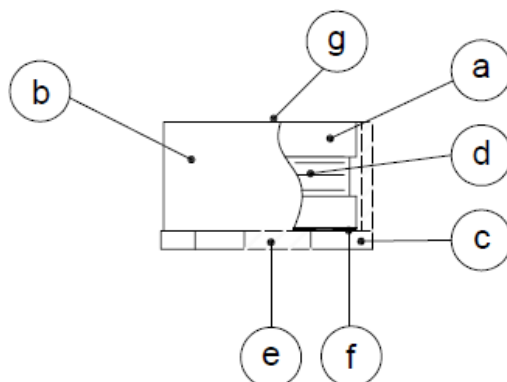
SCHEMATIC:



GENERAL SPECIFICATION :

- 1- Temp. rise: 40°C Max.
- 2- Operating temp. : -40°C to +85°C
- 3- Storage temp. : -40°C to +125°C
- 4- Rated current: Base on temp. rise & $\Delta L/L0A=30\%$ Max.
- 5- Resistance to solder heat: 260°C. 10sec.

MATERIALS:



- (a) Core : DR Ferrite Core
- (b) Core : RI Ferrite Core
- (c) Base : LCP
- (d) Wire : Enamelled Copper Wire
- (e) Terminal : Tinned Copper Plate
- (f) Adhesive : Epoxy
- (g) Ink : Bon Margue

NOTE : Specifications subject to change without notice. Please check our website for latest information.

WIREWOUND CHIP SMD INDUCTOR

SERIE: RLS1003 10,0 x 10,0 x 3,0 mm



ELECTRICAL CHARACTERISTICS:

Part No.	Inductance (uH)	Tolerance	Test Frequency (Hz)	RDC (mΩ) Max	IDC (A) Max.
RLS1003 - 1R5	1,5	± 20%	1V / 100K	22	4,00
RLS1003 - 2R2	2,2	± 20%	1V / 100K	25	3,50
RLS1003 - 3R3	3,3	± 20%	1V / 100K	40	3,00
RLS1003 - 4R7	4,7	± 20%	1V / 100K	45	2,50
RLS1003 - 6R8	6,8	± 20%	1V / 100K	60	2,20
RLS1003 - 100	10	± 20%	1V / 100K	70	2,00
RLS1003 - 120	12	± 20%	1V / 100K	95	1,90
RLS1003 - 150	15	± 20%	1V / 100K	120	1,70
RLS1003 - 180	18	± 20%	1V / 100K	130	1,55
RLS1003 - 220	22	± 20%	1V / 100K	180	1,45
RLS1003 - 270	27	± 20%	1V / 100K	200	1,30
RLS1003 - 330	33	± 20%	1V / 100K	210	1,10
RLS1003 - 390	39	± 20%	1V / 100K	270	1,00
RLS1003 - 470	47	± 20%	1V / 100K	300	0,85
RLS1003 - 560	56	± 20%	1V / 100K	400	0,80
RLS1003 - 680	68	± 20%	1V / 100K	440	0,75
RLS1003 - 820	82	± 20%	1V / 100K	490	0,65
RLS1003 - 101	100	± 20%	1V / 100K	670	0,60
RLS1003 - 121	120	± 20%	1V / 100K	740	0,55
RLS1003 - 151	150	± 20%	1V / 100K	790	0,50
RLS1003 - 181	180	± 20%	1V / 100K	1200	0,45
RLS1003 - 221	220	± 20%	1V / 100K	1350	0,40
RLS1003 - 271	270	± 20%	1V / 100K	1800	0,38
RLS1003 - 331	330	± 20%	1V / 100K	2000	0,32
RLS1003 - 391	390	± 20%	1V / 100K	2100	0,30

NOTE : Specifications subject to change without notice. Please check our website for latest information.

WIREWOUND CHIP SMD INDUCTOR

SERIE: RLS1003 10,0 x 10,0 x 3,0 mm



ELECTRICAL CHARACTERISTICS:

Part No.	Inductance (uH)	Tolerance	Test Frequency (Hz)	DCR (mΩ) Max	IDC (A) Max.
RLS1003 - 471	470	± 20%	1V / 100K	3500	0,28
RLS1003 - 561	560	± 20%	1V / 100K	3900	0,25
RLS1003 - 681	680	± 20%	1V / 100K	4100	0,22
RLS1003 - 821	820	± 20%	1V / 100K	4550	0,20
RLS1003 - 102	1000	± 20%	1V / 100K	5100	0,18

NOTE : Specifications subject to change without notice. Please check our website for latest information.