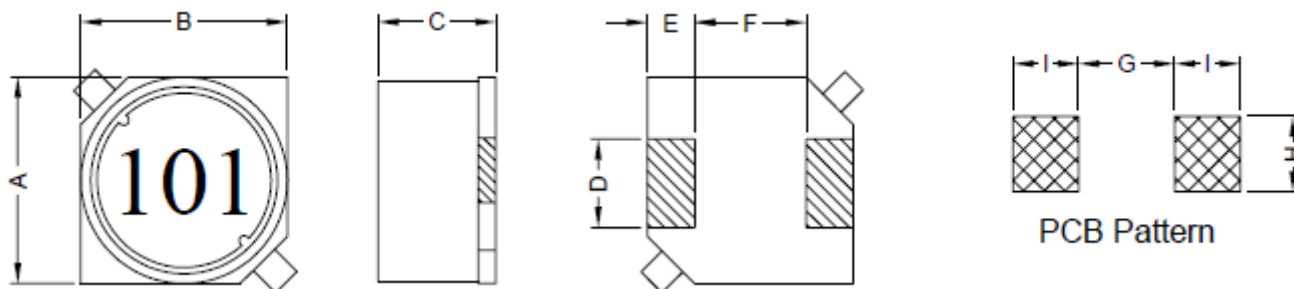


# WIREWOUND CHIP SMD INDUCTOR

**SERIE:** RLS1004 10,0 x 10,0 x 4,6 mm

## DIMENSIONS:

VPE: 600pcs.



Unit:m/m

A	B	C	D	E	F	G	H	I
10.0±0.3	10.0±0.3	4.6±0.3	2.4±0.2	2.0±0.2	6.0±0.2	5.7 Ref.	2.8 Ref.	2.5 Ref.

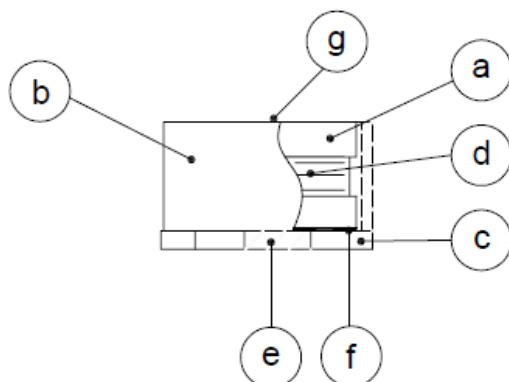
## SCHEMATIC:



## GENERAL SPECIFICATION :

- 1- Temp. rise: 40°C Max.
- 2- Operating temp. : -40°C to +85°C
- 3- Storage temp. : -40°C to +125°C
- 4- Rated current: Base on temp. rise &  $\Delta L/L0A=30\%$  Max.
- 5- Resistance to solder heat: 260°C. 10sec.

## MATERIALS:



- (a) Core : DR Ferrite Core
- (b) Core : RI Ferrite Core
- (c) Base : LCP
- (d) Wire : Enamelled Copper Wire
- (e) Terminal : Tinned Copper Plate
- (f) Adhesive : Epoxy
- (g) Ink : Bon Margue

NOTE : Specifications subject to change without notice. Please check our website for latest information.

## WIREWOUND CHIP SMD INDUCTOR

**SERIE:** RLS1004 10,0 x 10,0 x 4,6 mm



### ELECTRICAL CHARACTERISTICS:

Part No.	Inductance (uH)	Tolerance	Test Frequency (Hz)	RDC (mΩ) Max	IDC (A) Max.
RLS1004 - 1R5	1,5	± 20%	1V / 100K	21	5,00
RLS1004 - 2R2	2,2	± 20%	1V / 100K	24	4,50
RLS1004 - 3R3	3,3	± 20%	1V / 100K	26	4,00
RLS1004 - 4R7	4,7	± 20%	1V / 100K	30	3,00
RLS1004 - 6R8	6,8	± 20%	1V / 100K	35	2,50
RLS1004 - 100	10	± 20%	1V / 100K	42	2,20
RLS1004 - 120	12	± 20%	1V / 100K	50	2,00
RLS1004 - 150	15	± 20%	1V / 100K	55	1,80
RLS1004 - 180	18	± 20%	1V / 100K	60	1,70
RLS1004 - 220	22	± 20%	1V / 100K	80	1,50
RLS1004 - 270	27	± 20%	1V / 100K	85	1,20
RLS1004 - 330	33	± 20%	1V / 100K	110	1,15
RLS1004 - 390	39	± 20%	1V / 100K	120	1,10
RLS1004 - 470	47	± 20%	1V / 100K	150	1,00
RLS1004 - 560	56	± 20%	1V / 100K	160	0,90
RLS1004 - 680	68	± 20%	1V / 100K	190	0,85
RLS1004 - 820	82	± 20%	1V / 100K	210	0,80
RLS1004 - 101	100	± 20%	1V / 100K	300	0,70
RLS1004 - 121	120	± 20%	1V / 100K	330	0,65
RLS1004 - 151	150	± 20%	1V / 100K	360	0,55
RLS1004 - 181	180	± 20%	1V / 100K	510	0,50
RLS1004 - 221	220	± 20%	1V / 100K	560	0,45
RLS1004 - 271	270	± 20%	1V / 100K	700	0,40
RLS1004 - 331	330	± 20%	1V / 100K	760	0,37
RLS1004 - 391	390	± 20%	1V / 100K	1050	0,32

NOTE : Specifications subject to change without notice. Please check our website for latest information.

## **WIREWOUND CHIP SMD INDUCTOR**

**SERIE:** RLS1004 10,0 x 10,0 x 4,6 mm



### **ELECTRICAL CHARACTERISTICS:**

Part No.	Inductance (uH)	Tolerance	Test Frequency (Hz)	DCR (mΩ ) Max	IDC (A) Max.
<b>RLS1004 - 471</b>	470	± 20%	1V / 100K	1100	0,30
<b>RLS1004 - 561</b>	560	± 20%	1V / 100K	1250	0,28
<b>RLS1004 - 681</b>	680	± 20%	1V / 100K	1700	0,24
<b>RLS1004 - 821</b>	820	± 20%	1V / 100K	1900	0,23
<b>RLS1004 - 102</b>	1000	± 20%	1V / 100K	2150	0,22

*NOTE : Specifications subject to change without notice. Please check our website for latest information.*