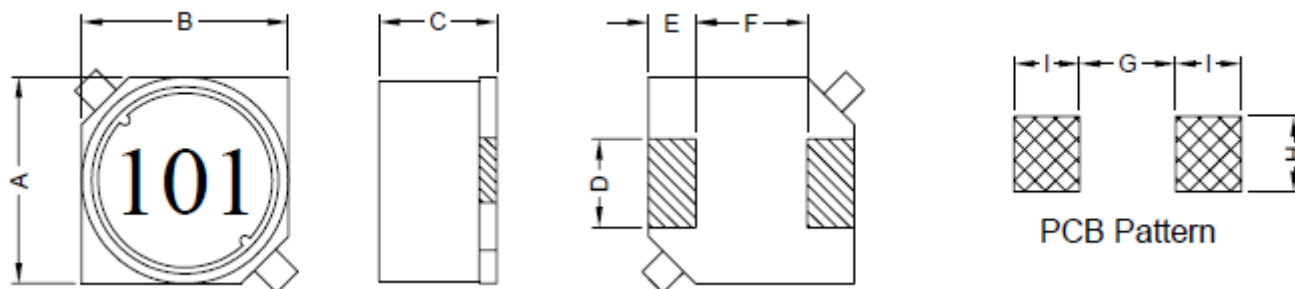


WIREWOUND CHIP SMD INDUCTOR

SERIE: RLS1205 12,5 x 12,5 x 5,50 mm

DIMENSIONS:

VPE: 600pcs.



Unit:m/m

A	B	C	D	E	F	G	H	I
12.50±0.3	12.50±0.3	5.50±0.3	3.0±0.10	2.0±0.15	8.6±0.30	5.6 Ref.	3.2 Ref.	2.5 Ref.

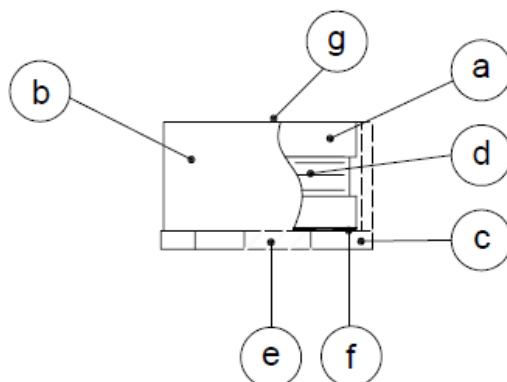
SCHEMATIC:



GENERAL SPECIFICATION :

- 1- Temp. rise: 40°C Max.
- 2- Operating temp. : -40°C to + 85°C
- 3- Storage temp. : -40°C to +125°C
- 4- Rated current: Base on temp. rise & $\Delta L/L0A=10\%$ Max.
- 5- Resistance to solder heat: 260°C. 10sec.

MATERIALS:



- (a) Core : DR Ferrite Core
- (b) Core : RI Ferrite Core
- (c) Base : LCP
- (d) Wire : Enamelled Copper Wire
- (e) Terminal : Tinned Copper Plate
- (f) Adhesive : Epoxy
- (g) Ink : Bon Margue

NOTE : Specifications subject to change without notice. Please check our website for latest information.

WIREWOUND CHIP SMD INDUCTOR

SERIE: RLS1205 12,5 x 12,5 x 5,50 mm



ELECTRICAL CHARACTERISTICS:

Part No.	Inductance (uH)	Tolerance	Test Frequency (Hz)	RDC (mΩ) Max	I _{rms} (A) Typ.	IDC (A) Typ.
RLS1205 - 4R7	4,7	± 20%	1V / 100K	23	5,30	5,00
RLS1205 - 6R8	6,8	± 20%	1V / 100K	25	5,00	4,00
RLS1205 - 100	10	± 20%	1V / 100K	30	4,50	3,50
RLS1205 - 150	15	± 20%	1V / 100K	38	4,00	2,80
RLS1205 - 220	22	± 20%	1V / 100K	46	3,50	2,30
RLS1205 - 330	33	± 20%	1V / 100K	60	3,20	1,90
RLS1205 - 470	47	± 20%	1V / 100K	85	2,50	1,60
RLS1205 - 680	68	± 20%	1V / 100K	110	2,20	1,30
RLS1205 - 101	100	± 20%	1V / 100K	150	1,80	1,10
RLS1205 - 151	150	± 20%	1V / 100K	240	1,40	0,90
RLS1205 - 221	220	± 20%	1V / 100K	350	1,20	0,72
RLS1205 - 331	330	± 20%	1V / 100K	500	1,00	0,60
RLS1205 - 471	470	± 20%	1V / 100K	710	0,88	0,50
RLS1205 - 681	680	± 20%	1V / 100K	1000	0,73	0,43
RLS1205 - 102	1000	± 20%	1V / 100K	1450	0,60	0,35
RLS1205 - 152	1500	± 20%	1V / 100K	2100	0,48	0,29

NOTE : Specifications subject to change without notice. Please check our website for latest information.