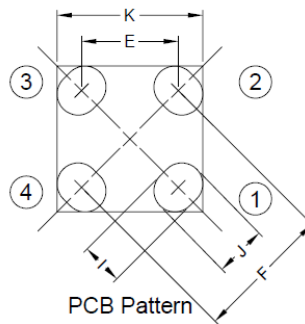
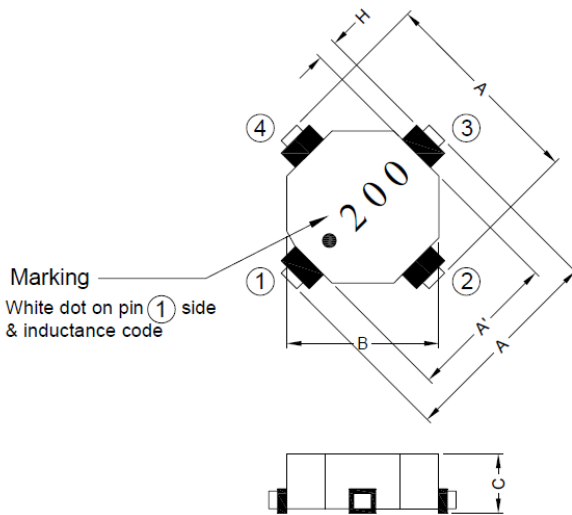


# SHIELDED SMD POWER INDUCTORS

**SERIE:** TBK1106 11,43 x 8,89 x 5,97 mm

## DIMENSIONS:

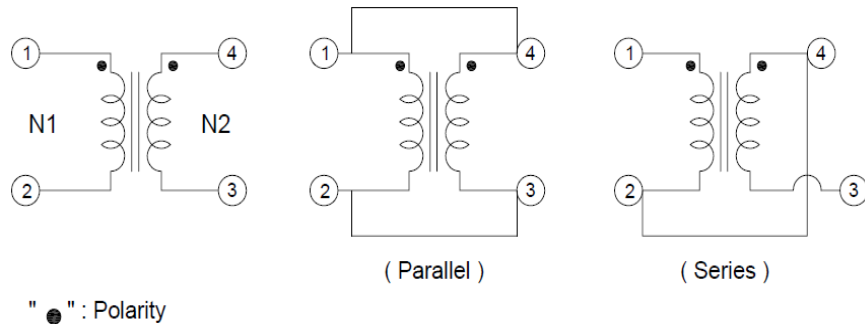
VPE: 800pcs.



Unit:m/m

A	A'	B	C	E	F	H	I	J	K
11.43 Typ.	8.89 Typ.	8.89 Typ.	5.97 Max.	7.04 Typ.	9.96 Typ.	0.76 Min.	3.05 Typ.	3.69 Typ.	10.70 Typ.

## SCHEMATIC:



## GENERAL SPECIFICATION :

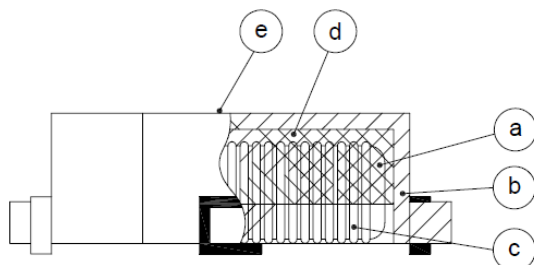
- 1- Storage temp. : -40°C to 125°C
- 2- Operating temp.: - 40°C to + 85°C
- 3- Resistance to solder heat: 260°C . 10sec.
- 4- HI-Pot test ( N-N ) : 500VAC 60Hz 1mA 1 sec.

*NOTE : Specifications subject to change without notice. Please check our website for latest information.*

## SHIELDED SMD POWER INDUCTORS

**SERIE:** TBK1106 11,43 x 8,89 x 5,97 mm

### MATERIALS:



- (a) Core : Iron Core
- (b) Base : Phenolic
- (c) Wire : Enamelled Copper Wire
- (d) Adhesive : Epoxy
- (e) Ink : Bon Margue

### ELECTRICAL CHARACTERISTICS:

Part. No	Parallel					
	L (uH)	Tolerance	LIDC (uH) Min	Test Frequency (Hz)	RDC (Ω) Max.	IDC (A)
TBK1106 - R54	0,54	20%	0,42	0,25V 100K	0,006	5,90
TBK1106 - R85	0,85	20%	0,64	0,25V 100K	0,007	5,40
TBK1106 - 1R2	1,22	20%	0,89	0,25V 100K	0,008	5,00
TBK1106 - 2R2	2,18	20%	1,56	0,25V 100K	0,014	3,90
TBK1106 - 4R7	4,90	20%	3,57	0,25V 100K	0,032	2,50
TBK1106 - 7R6	7,65	20%	5,31	0,25V 100K	0,040	2,30
TBK1106 - 100	9,83	20%	6,73	0,25V 100K	0,045	2,10
TBK1106 - 150	14,99	20%	10,51	0,25V 100K	0,085	1,60
TBK1106 - 200	19,58	20%	13,37	0,25V 100K	0,097	1,50
TBK1106 - 250	24,79	20%	16,60	0,25V 100K	0,109	1,40
TBK1106 - 330	32,67	20%	21,29	0,25V 100K	0,126	1,30
TBK1106 - 500	49,10	20%	35,31	0,25V 100K	0,305	0,82
TBK1106 - 680	68,85	20%	47,93	0,25V 100K	0,362	0,76
TBK1106 - 101	99,14	20%	69,56	0,25V 100K	0,541	0,62

NOTE : Specifications subject to change without notice. Please check our website for latest information.

## SHIELDED SMD POWER INDUCTORS

**SERIE:** TBK1106 11,43 x 8,89 x 5,97 mm



COILS ■ ELEKTRONIK ■ TRANSFORMERS

### ELECTRICAL CHARACTERISTICS:

Part. No	Series					
	L ( $\mu$ H)	Tolerance	LIDC ( $\mu$ H) Min	Test Frequenc y (Hz)	RDC ( $\Omega$ ) Max.	IDC (A)
TBK1106 - R54	2,18	20%	1,69	0,25V 100K	0,024	2,95
TBK1106 - R85	3,40	20%	2,55	0,25V 100K	0,029	2,70
TBK1106 - 1R2	4,90	20%	3,57	0,25V 100K	0,033	2,50
TBK1106 - 2R2	8,70	20%	6,26	0,25V 100K	0,055	1,95
TBK1106 - 4R7	19,58	20%	14,26	0,25V 100K	0,128	1,25
TBK1106 - 7R6	30,60	20%	21,23	0,25V 100K	0,158	1,15
TBK1106 - 100	39,30	20%	26,92	0,25V 100K	0,179	1,05
TBK1106 - 150	59,98	20%	42,02	0,25V 100K	0,339	0,80
TBK1106 - 200	78,34	20%	53,48	0,25V 100K	0,387	0,75
TBK1106 - 250	99,14	20%	66,38	0,25V 100K	0,436	0,70
TBK1106 - 330	130,70	20%	85,17	0,25V 100K	0,503	0,65
TBK1106 - 500	196,38	20%	141,24	0,25V 100K	1,221	0,41
TBK1106 - 680	275,40	20%	191,71	0,25V 100K	1,445	0,38
TBK1106 - 101	396,58	20%	278,22	0,25V 100K	2,162	0,31

NOTE : Specifications subject to change without notice. Please check our website for latest information.