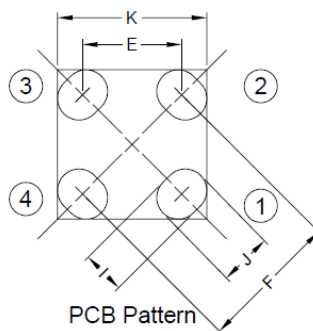
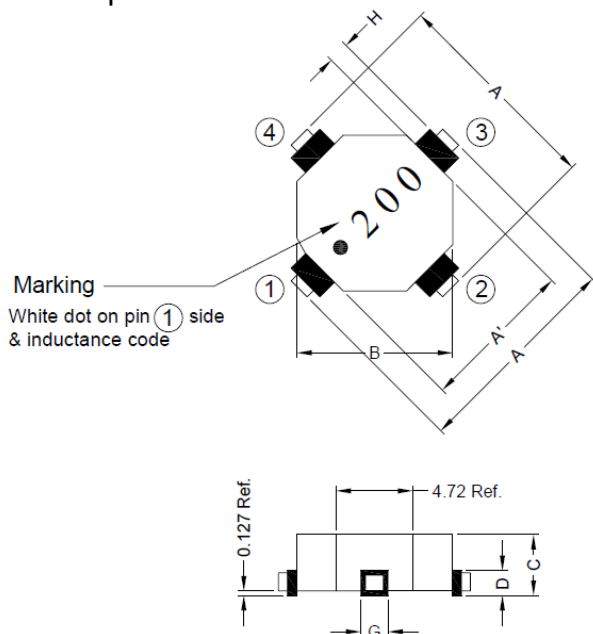


SHIELDED SMD POWER INDUCTORS

SERIE: TBK1306 13,97 x 11,43 x 6,35 mm

DIMENSIONS:

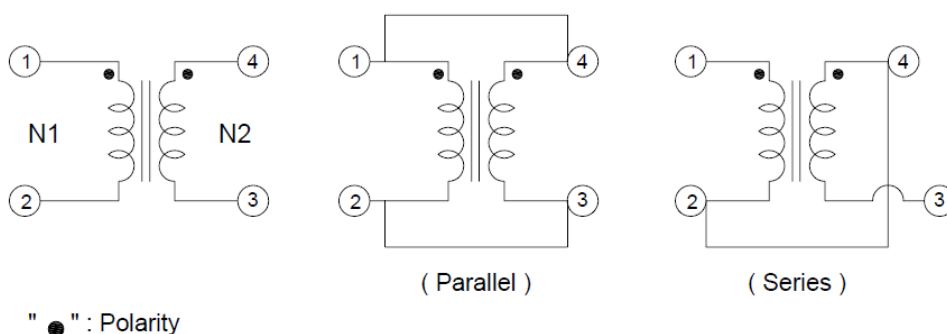
VPE: 600pcs.



Unit:m/m

A	A'	B	C	D	E	F	G	H	I	J	K
13.97 Typ.	11.43 Typ.	11.43 Typ.	6.35 Max.	3.05 Max.	8.84 Typ.	12.50 Typ.	3.55 Max.	0.76 Min.	3.05 Typ.	4.06 Typ.	12.50 Typ.

SCHEMATIC:



GENERAL SPECIFICATION :

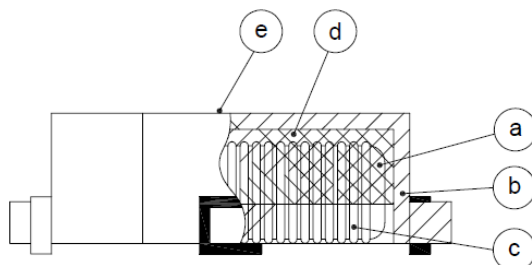
- 1- Operating temp.: - 40°C to + 85°C
- 2- Resistance to solder heat: 260°C . 10sec.

NOTE : Specifications subject to change without notice. Please check our website for latest information.

SHIELDED SMD POWER INDUCTORS

SERIE: TBK1306 13,97 x 11,43 x 6,35 mm

MATERIALS:



- (a) Core : Iron Core
- (b) Base : Phenolic
- (c) Wire : Enamelled Copper Wire
- (d) Adhesive : Epoxy
- (e) Ink : Bon Margue

Turns Ratio: 1: 1

Hi-Pot Test (N1 - N2) : 300Vdc 1mA 1sec.

ELECTRICAL CHARACTERISTICS:

Part. No	Parallel				
	L (uH) 20%	L _{IDC} (uH) Min	Test Frequency (Hz)	RDC (Ω) Max.	IDC (A)
TBK1306 - R49	0,49	0,37	0,25V 100K	0,0093	7,90
TBK1306 - R76	0,76	0,56	0,25V 100K	0,0112	7,20
TBK1306 - 1R1	1,10	0,81	0,25V 100K	0,0166	5,90
TBK1306 - 1R9	1,95	1,42	0,25V 100K	0,0274	4,60
TBK1306 - 5R1	5,15	3,56	0,25V 100K	0,0534	3,30
TBK1306 - 7R8	7,81	5,15	0,25V 100K	0,0653	3,00
TBK1306 - 9R8	9,88	6,70	0,25V 100K	0,0933	2,50
TBK1306 - 140	14,76	9,52	0,25V 100K	0,1139	2,30
TBK1306 - 200	20,62	13,44	0,25V 100K	0,1684	1,90
TBK1306 - 250	25,65	17,17	0,25V 100K	0,2306	1,60
TBK1306 - 330	33,21	22,93	0,25V 100K	0,3312	1,30
TBK1306 - 480	48,80	32,21	0,25V 100K	0,4025	1,20
TBK1306 - 670	67,37	43,04	0,25V 100K	0,4760	1,10
TBK1306 - 990	99,09	69,54	0,25V 100K	1,1300	0,72

NOTE : Specifications subject to change without notice. Please check our website for latest information.

SHIELDED SMD POWER INDUCTORS

SERIE: TBK1306 13,97 x 11,43 x 6,35 mm



COILS ■ ELEKTRONIK ■ TRANSFORMERS

ELECTRICAL CHARACTERISTICS:

Part. No	Series				
	L (uH) 20%	L _{IDC} (uH) Min	Test Frequency (Hz)	RDC (Ω) Max.	IDC (A)
TBK1306 - R49	1,95	1,49	0,25V 100K	0,019	3,95
TBK1306 - R76	3,05	2,24	0,25V 100K	0,023	3,60
TBK1306 - 1R1	4,39	3,24	0,25V 100K	0,033	2,95
TBK1306 - 1R9	7,81	5,69	0,25V 100K	0,055	2,30
TBK1306 -5R1	20,62	14,23	0,25V 100K	0,107	1,65
TBK1306 - 7R8	31,23	20,61	0,25V 100K	0,131	1,50
TBK1306 - 9R8	39,53	26,79	0,25V 100K	0,187	1,25
TBK1306 - 140	59,05	38,09	0,25V 100K	0,228	1,15
TBK1306 - 200	82,47	53,76	0,25V 100K	0,337	0,95
TBK1306 - 250	102,60	68,68	0,25V 100K	0,461	0,80
TBK1306 - 330	132,86	91,72	0,25V 100K	0,662	0,65
TBK1306 - 480	195,20	128,83	0,25V 100K	0,805	0,60
TBK1306 - 670	269,50	172,16	0,25V 100K	0,952	0,55
TBK1306 - 990	396,38	278,15	0,25V 100K	2,259	0,36

NOTE : Specifications subject to change without notice. Please check our website for latest information.