

# HIGH CURRENT MOLDED POWER INDUCTORS

**SERIE:** TLC0805 10,5 x 8,0 x 5,0 mm

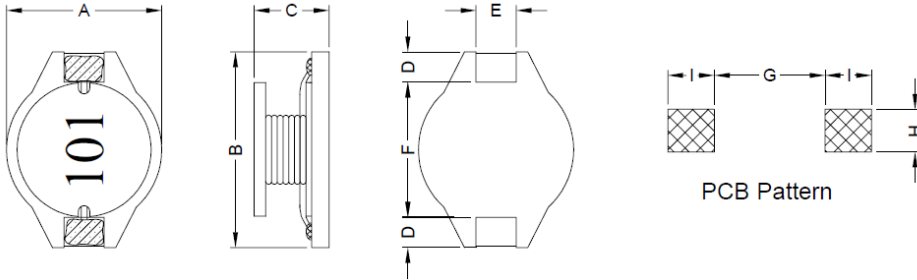


## DIMENSIONS:

VPE: 1000pcs.



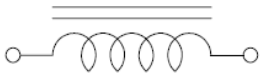
RoHS Compliant



Unit: mm

A	B	C	D	E	F	G	H	I
8,0 ± 0,2	10,5 ± 0,2	5,0 ± 0,3	2,1 ± 0,2	2,0 ± 0,2	6,0 ± 0,3	5,7 Ref.	2,2 Ref.	2,4 Ref.

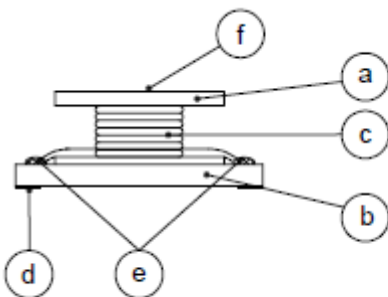
## SCHEMATIC:



## GENERAL SPECIFICATION :

1. Temp. rise: 40°C Max.
2. Rated current: Base on temp. rise &  $\Delta L/\Delta I = 10\%$  Max.
3. Storage temp.: -40°C to +125°C
4. Operating temp.: -40°C to +85°C
5. Resistance to solder heat : 260°C 10sec.

## Materials :



- (a) Core : DR Ferrite Core
- (b) Base : LCP
- (c) Wire : Enamelled Copper Wire
- (d) Terminal : Tinned Copper Plate
- (e) Adhesive : Epoxy
- (f) Ink : Bon Margue

NOTE : Specifications subject to change without notice. Please check our website for latest information

## HIGH CURRENT MOLDED POWER INDUCTORS

**SERIE:** TLC0805 10,5 x 8,0 x 5,0 mm



### ELECTRICAL CHARACTERISTICS:

Part No.	Inductance ( $\mu\text{H}$ ) $\pm 20\%$	Q Ref.	Test Frequency ( Hz. )	SRF ( MHz. ) Typ.	Rdc ( $\text{m}\Omega$ )	IDC ( A )
TLC0805 - 3R3SWE	3,3	40	1V / 100K	50	30	3,7
TLC0805 - 4R7SWE	4,7	30	1V / 100K	40	35	3,3
TLC0805 - 6R8SWE	6,8	30	1V / 100K	30	50	2,7
TLC0805 - 100SWE	10	25	1V / 100K	23	60	2,3
TLC0805 - 150SWE	15	25	1V / 100K	20	80	2,1
TLC0805 - 220SWE	22	25	1V / 100K	16	130	1,6
TLC0805 - 330SWE	33	25	1V / 100K	12	180	1,3
TLC0805 - 470SWE	47	45	1V / 100K	11	260	1,1
TLC0805 - 680SWE	68	35	1V / 100K	9	350	1,1
TLC0805 - 101SWE	100	55	1V / 100K	7	580	0,7
TLC0805 - 151SWE	150	50	1V / 100K	5	750	0,6
TLC0805 - 221SWE	220	55	1V / 100K	4	1050	0,5
TLC0805 - 331SWE	330	50	1V / 100K	3,5	1600	0,45

*NOTE : Specifications subject to change without notice. Please check our website for latest information.*