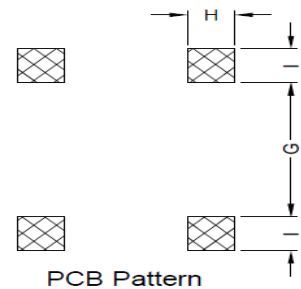
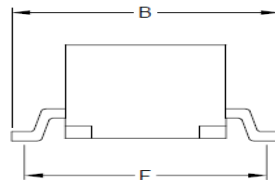
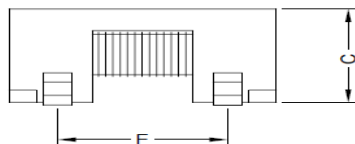
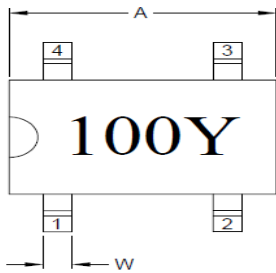


# COMMON MODE CHOKE

**SERIE:** COM-0402 4,6 x 5,0 x 2,5mm

## DIMENSIONS:

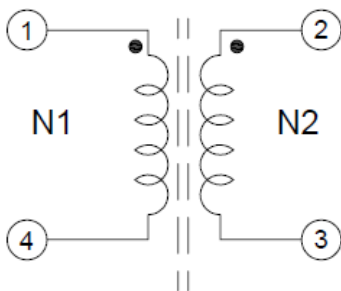
VPE: 2000pcs.



Unit:m/m

A	B	C	E	F	G	H	I	W
4.60±0.3	5.00±0.3	2.50±0.3	3.00±0.3	4.60±0.3	3.40 Ref.	0.80 Ref.	1.20 Ref.	0.50±0.1

## SCHEMATIC:

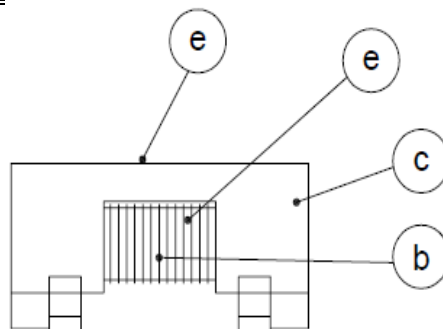


"●": Polarity

## GENERAL SPECIFICATION :

- 1- Temp. rise: 45°C Max. at rated current
- 2- Operating temp.: - 40°C to + 80°C
- 3- Storage temp.: - 40°C to + 125°C
- 4- Resistance to solder heat : 260°C 10sec.

## Materials :



- (a) Core : Ferrite Core
- (b) Wire : Enamelled Copper Wire
- (c) Base : Phenolic
- (d) Adhesive : Epoxy
- (e) Ink : Bon Margue

NOTE : Specifications subject to change without notice. Please check our website for latest information

# **COMMON MODE CHOKE**

**SERIE:** COM-0402 4,6 x 5,0 x 2,5mm



## **ELECTRICAL CHARACTERISTICS:**

Part No.	Inductance L1, L2 ( $\mu$ H )	DC Resistance N1, N2 ( $\Omega$ )	Impedance ( $\Omega$ )	Frequency Range ( MHz )	Rated Current( A )
<b>COM0402 - 100SWE</b>	10 $\pm$ 40%	0,035	80	10 ~ 1000	1,40
<b>COM0402 - 400SWE</b>	40 $\pm$ 40%	0,070	250	5 ~ 500	1,25
<b>COM0402 - 850SWE</b>	85 $\pm$ 40%	0,135	400	3 ~ 300	0,90
<b>COM0402 - 151SWE</b>	150 $\pm$ 40%	0,220	600	2 ~ 100	0,50
<b>COM0402 - 221SWE</b>	220 $\pm$ 40%	0,350	800	1 ~ 50	0,45

- Hi – Pot Test (N1 – N2 ) : 500VAC 60Hz. 3mA 1Min.

*NOTE : Specifications subject to change without notice. Please check our website for latest information.*