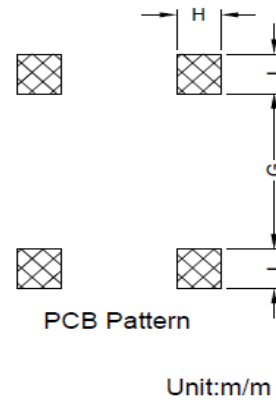
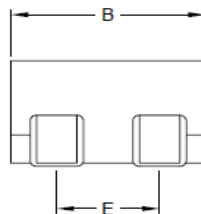
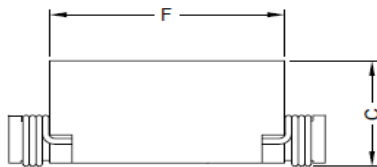
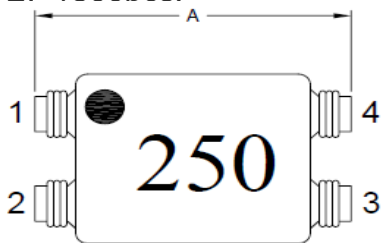


COMMON MODE CHOKE

SERIE: COM-0703 5,3 x 8,0 x 3,5mm

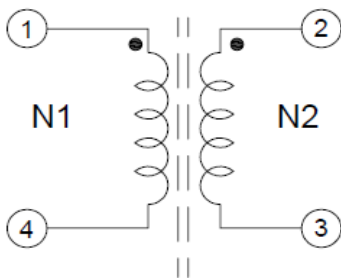
DIMENSIONS:

VPE: 1500pcs.



| A | B | C | E | F | G | H | I |
|----------|----------|-----------|----------|----------|-----------|-----------|-----------|
| 8.00±0.2 | 5.30±0.2 | 3.50 Max. | 2.54±0.3 | 5.80±0.2 | 5.00 Ref. | 1.50 Ref. | 1.80 Ref. |

SCHEMATIC:

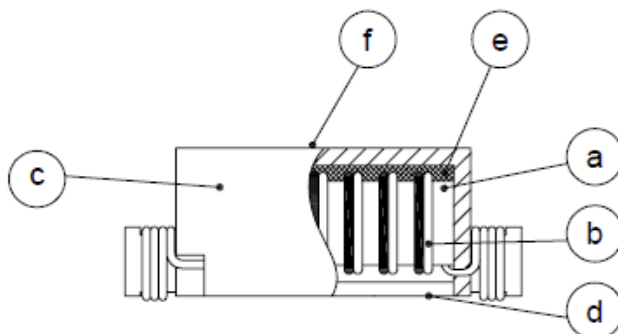


"●": Polarity

GENERAL SPECIFICATION :

- 1- Temp. rise: 45°C Max. at rated current
- 2- Operating temp.: - 40°C to + 80°C
- 3- Storage temp.: - 40°C to + 125°C
- 4- Resistance to solder heat : 260°C 10sec.

Materials :



- (a) Core : Ferrite Core
- (b) Wire : Enamelled Copper Wire
- (c) Base : Phenolic
- (d) Cover : Phenolic
- (e) Adhesive : Epoxy
- (f) Ink : Bon Margue

NOTE : Specifications subject to change without notice. Please check our website for latest information

COMMON MODE CHOKE

SERIE: COM-0703 5,3 x 8,0 x 3,5mm



ELECTRICAL CHARACTERISTICS:

| Part No. | Inductance L1, L2 (μ H) | DC Resistance N1, N2 (Ω) | Impedance (Ω) | Frequency Range (MHz) | Rated Current(A) |
|-------------------------|-------------------------------------|--|---------------------------|-------------------------------|--------------------------|
| COM0703 - 6R0SWE | 6 \pm 40% | 0,040 | 90 | 20 ~ 1000 | 2,00 |
| COM0703 - 250SWE | 25 \pm 40% | 0,070 | 300 | 10 ~ 700 | 1,60 |
| COM0703 - 550SWE | 55 \pm 40% | 0,130 | 500 | 5 ~ 100 | 1,10 |
| COM0703 - 101SWE | 100 \pm 40% | 0,220 | 600 | 3 ~ 60 | 0,90 |
| COM0703 - 151SWE | 150 \pm 40% | 0,420 | 900 | 2 ~ 40 | 0,65 |

- Hi – Pot Test (N1 – N2) : 500VAC 60Hz. 3mA 1Min.

NOTE : Specifications subject to change without notice. Please check our website for latest information.