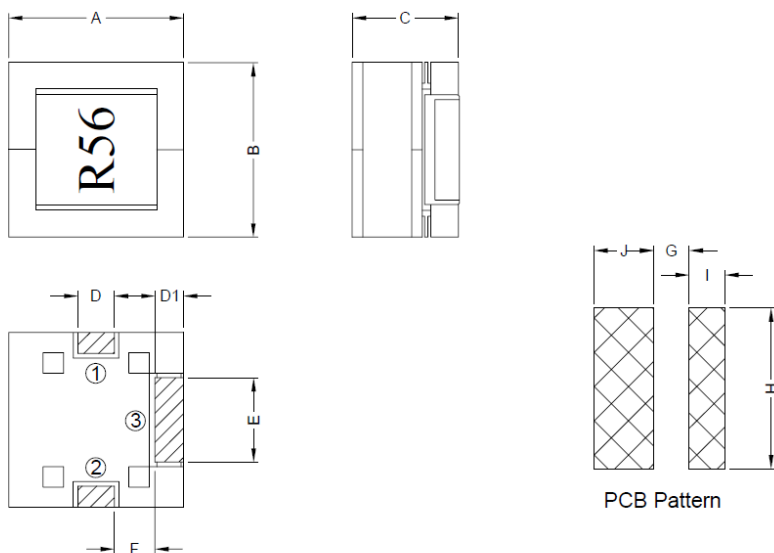


SHIELDED SMD POWER INDUCTORS

SERIE: SMCC1409 14,7 x 15,0 x 9,5 mm

DIMENSIONS:

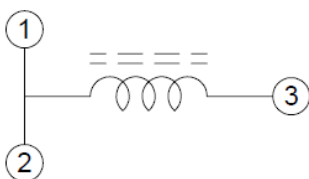
VPE: 350pcs.



Unit:m/m

A	B	C	D	D1	E	F	G	H	I	J
14.70±0.30	15.00±0.30	9.50±0.30	4.00±0.30	2.00±0.30	8.00±0.30	4.00±1.00	3.00 Ref.	13.50 Ref.	3.00 Ref.	5.00 Ref.

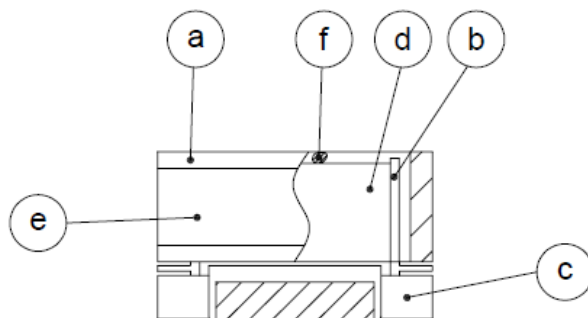
SCHEMATIC:



GENERAL SPECIFICATION :

- 1- Temp.rise : 40°C Typ. at rated current.
- 2- Rated current: Base on temp. rise & $\Delta L/L0 = 25\%$ Max.
- 3- Storage temp. : -40°C to 125°C
- 4- Operating temp.: - 40°C to + 85°C
- 5- Resistance to solder heat: 260°C . 10sec.

MATERIALS:



- (a) Core : EPC Ferrite Core
- (b) Bobbin : Phenolic
- (c) Base : Phenolic
- (d) Wire : Copper Foil
- (e) Tape : Mylar Tape
- (f) Adhesive : Epoxy
- (g) Varnish : 8562/C

NOTE : Specifications subject to change without notice. Please check our website for latest information.

SHIELDED SMD POWER INDUCTORS

SERIE: SMCC1409 14,7 x 15,0 x 9,5 mm



ELECTRICAL CHARACTERISTICS:

Part No.	L (μ H)	Tolerance	Test Frequency (Hz)	RDC ($m\Omega$)	IDC (A)
SMCC1409 - R56	0,56	30%	1V / 100K	1,00	30
SMCC1409 - 1R0	1,00	20%	1V / 100K	1,35	22
SMCC1409 - 1R6	1,60	20%	1V / 100K	1,70	18
SMCC1409 - 2R2	2,20	20%	1V / 100K	2,35	15

NOTE : Specifications subject to change without notice. Please check our website for latest information.