

MOLDED TYPE WIREWOUND CHIP INDUCTOR

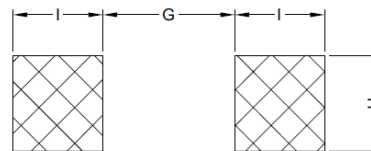
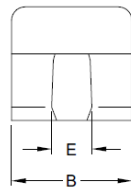
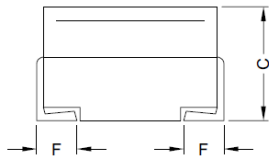
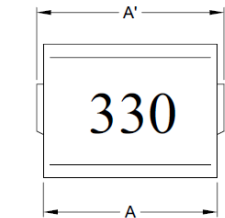
SERIE: STW453232 4,5 x 3,2 x 3,2 mm

DIMENSIONS:

VPE: 500pcs.



RoHS Compliant



PCB Pattern

Unit:m/m

A'	A	B	C	E	F	G	H	I
4.5±0.3	4.2±0.2	3.2±0.2	3.2±0.2	1.2±0.2	1.0±0.2	2.2 Ref.	1.6 Ref.	1.5 Ref.

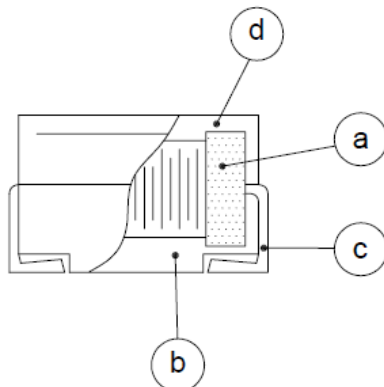
SCHEMATIC:



GENERAL SPECIFICATION :

- 1- Temp. rise: 20°C Max.
- 2- Ambient temp.: 100°C
- 3- Storage temp.: -40°C to + 125°C
- 4- Operating temp.: -40°C to + 125°C
- 5- Rated current: Current cause inductance drop within 10%
- 6- Resistance to solder heat: 260°C for 10 sec.
- 7- Resistance to solvent: Per MIL – STD- 202F

MATERIALS:



- (a) Core : DR Ferrite Core
- (b) Wire : Enamelled Copper Wire
- (c) Terminal : Tinned Copper Plate
- (d) Capsulate : Epoxy Novolac Molding Compound

NOTE : Specifications subject to change without notice. Please check our website for latest information.

MOLDED TYPE WIREWOUND CHIP INDUCTOR

SERIE: STW453232 4,5 x 3,2 x 3,2 mm



ELECTRICAL CHARACTERISTICS:

Part. No	L (μ H)	Q Min.	Test Frequency (MHz)	SRF (MHz.) Min.	RDC (Ω) Max.	IDC (mA) Max.
STW453232 – R10SWE *	0,10	35	25,2	300	0,18	800
STW453232 – R12SWE *	0,12	35	25,2	280	0,20	770
STW453232 – R15SWE *	0,15	35	25,2	250	0,22	730
STW453232 – R18SWE *	0,18	35	25,2	220	0,24	700
STW453232 – R22SWE *	0,22	40	25,2	200	0,25	665
STW453232 – R27SWE *	0,27	40	25,2	180	0,26	635
STW453232 – R33SWE *	0,33	40	25,2	165	0,28	605
STW453232 – R39SWE *	0,39	40	25,2	150	0,30	575
STW453232 – R47SWE *	0,47	40	25,2	145	0,32	545
STW453232 – R56SWE *	0,56	40	25,2	140	0,60	520
STW453232 – R68SWE *	0,68	40	25,2	135	0,40	500
STW453232 – R82SWE *	0,82	50	7,96	130	0,45	475
STW453232 – 1R0SWE *	1,00	50	7,96	100	0,50	450
STW453232 – 1R2SWE *	1,20	50	7,96	80	0,55	430
STW453232 – 1R5SWE *	1,50	50	7,96	70	0,60	410
STW453232 – 1R8SWE *	1,80	50	7,96	60	0,65	390
STW453232 – 2R2SWE *	2,20	50	7,96	55	0,70	380
STW453232 – 2R7SWE *	2,70	50	7,96	50	0,75	370
STW453232 – 3R3SWE *	3,30	50	7,96	45	0,80	355
STW453232 – 3R9SWE *	3,90	50	7,96	40	0,90	330
STW453232 – 4R7SWE *	4,70	50	7,96	35	1,00	315
STW453232 – 5R6SWE *	5,60	50	7,96	33	1,10	300
STW453232 – 6R8SWE *	6,80	50	7,96	27	1,20	285
STW453232 – 8R2SWE *	8,20	50	7,96	25	1,40	270
STW453232 – 100SWE *	10	50	2,52	20	1,60	250
STW453232 – 120SWE *	12	50	2,52	18	2,00	225
STW453232 – 150SWE *	15	50	2,52	17	2,50	200

NOTE : Specifications subject to change without notice. Please check our website for latest information.

MOLDED TYPE WIREWOUND CHIP INDUCTOR

SERIE: STW453232 4,5 x 3,2 x 3,2 mm



ELECTRICAL CHARACTERISTICS:

Part. No	L (μH)	Q Min.	Test Frequency (MHz)	SRF (MHz.) Min.	RDC (Ω) Max.	IDC (mA) Max.
STW453232 – 180SWE *	18	50	2,52	15	2,80	190
STW453232 – 220SWE *	22	50	2,52	13	3,20	180
STW453232 – 270SWE *	27	50	2,52	12	3,60	170
STW453232 – 330SWE *	33	50	2,52	11	4,00	160
STW453232 – 390SWE *	39	50	2,52	10	4,50	150
STW453232 – 470SWE *	47	50	2,52	10	5,00	140
STW453232 – 560SWE *	56	50	2,52	9,0	5,50	135
STW453232 – 680SWE *	68	50	2,52	9,0	6,00	130
STW453232 – 820SWE *	82	50	2,52	8,0	7,00	120
STW453232 – 101SWE *	100	40	0,796	8,0	8,00	110
STW453232 – 121SWE *	120	40	0,796	6,0	8,00	110
STW453232 – 151SWE *	150	40	0,796	5,0	9,00	105
STW453232 – 181SWE *	180	40	0,796	5,0	9,50	102
STW453232 – 221SWE *	220	40	0,796	4,0	10,00	100
STW453232 – 271SWE *	270	40	0,796	4,0	12,00	92
STW453232 – 331SWE *	330	40	0,796	3,5	14,00	85
STW453232 – 391SWE *	390	40	0,796	3,0	18,00	80
STW453232 – 471SWE *	470	40	0,796	3,0	26,00	62
STW453232 – 561SWE *	560	30	0,796	3,0	30,00	50
STW453232 – 681SWE *	680	30	0,796	3,0	30,00	50
STW453232 – 821SWE *	820	30	0,796	2,5	35,00	30
STW453232 – 102SWE *	1000	20	0,252	2,5	40,00	30

* : J: 5%
K: 10%
M: 20%

NOTE : Specifications subject to change without notice. Please check our website for latest information.