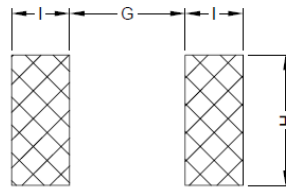
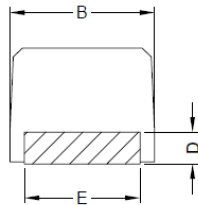
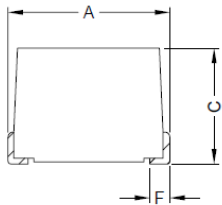


MOLDED TYPE WIREWOUND CHIP INDUCTOR

SERIE: STW565050 5,6 x 5,0 x 4,0 mm

DIMENSIONS:

VPE: 1000pcs.



PCB Pattern

Unit:m/m

A	B	C	D	E	F	G	H	I
5.6±0.3	5.0±0.2	4.0±0.2	1.1 Ref.	4.0±0.2	0.7±0.1	4.0 Ref.	4.5 Ref.	2.0 Ref.

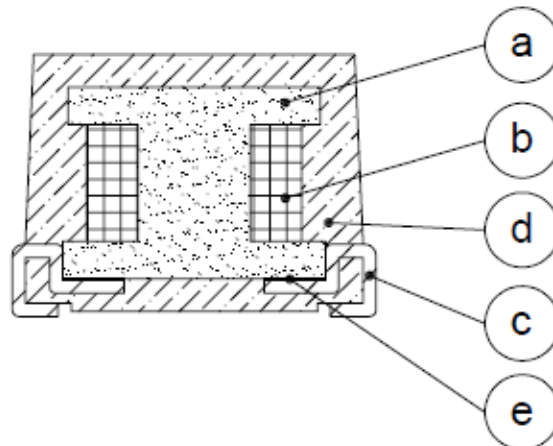
SCHEMATIC:



GENERAL SPECIFICATION :

- 1- Temp. rise: 20°C Max.
- 2- Operating temp.: -40°C to + 105°C
- 3- Rated current: Current cause inductance drop within 10%

MATERIALS:



- (a) Core
- (b) Wire
- (c) Terminal
- (d) Capsulate
- (e) Epoxy

NOTE : Specifications subject to change without notice. Please check our website for latest information.

MOLDED TYPE WIREWOUND CHIP INDUCTOR

SERIE: STW565050 5,6 x 5,0 x 4,0 mm



ELECTRICAL CHARACTERISTICS:

Part. No	L (μ H)	Q Min.	Test Frequency (MHz)	SRF (MHz.) Min.	RDC (Ω) Max.	IDC (mA) Max.
STW565050 – 1R0SWE *	1,00	10	7,96	95	0,030	1800
STW565050 – 1R2SWE *	1,20	10	7,96	70	0,035	1700
STW565050 – 1R5SWE *	1,50	10	7,96	55	0,04	1600
STW565050 – 1R8SWE *	1,80	10	7,96	47	0,05	1400
STW565050 – 2R2SWE *	2,20	10	7,96	42	0,06	1300
STW565050 – 2R7SWE *	2,70	10	7,96	37	0,07	1200
STW565050 – 3R3SWE *	3,30	10	7,96	34	0,08	1120
STW565050 – 3R9SWE *	3,90	10	7,96	32	0,09	1050
STW565050 – 4R7SWE *	4,70	10	7,96	29	0,11	950
STW565050 – 5R6SWE *	5,60	10	7,96	26	0,13	880
STW565050 – 6R8SWE *	6,80	10	7,96	24	0,15	810
STW565050 – 8R2SWE *	8,20	10	7,96	22	0,18	750
STW565050 – 100SWE *	10	10	2,52	19	0,21	690
STW565050 – 120SWE *	12	10	2,52	17	0,25	630
STW565050 – 150SWE *	15	10	2,52	16	0,30	580
STW565050 – 180SWE *	18	10	2,52	14	0,36	530
STW565050 – 220SWE *	22	10	2,52	13	0,43	480
STW565050 – 270SWE *	27	10	2,52	11,5	0,52	440
STW565050 – 330SWE *	33	10	2,52	10,5	0,62	400
STW565050 – 390SWE *	39	10	2,52	9,5	0,72	370
STW565050 – 470SWE *	47	10	2,52	8,5	0,85	340
STW565050 – 560SWE *	56	10	2,52	7,8	1,0	310
STW565050 – 680SWE *	68	10	2,52	7,0	1,2	290
STW565050 – 820SWE *	82	10	2,52	6,4	1,4	270
STW565050 – 101SWE *	100	20	0,796	6,0	1,6	250
STW565050 – 121SWE *	120	20	0,796	5,4	1,9	230
STW565050 – 151SWE *	150	20	0,796	4,8	2,2	210

NOTE : Specifications subject to change without notice. Please check our website for latest information.

MOLDED TYPE WIREWOUND CHIP INDUCTOR

SERIE: STW565050 5,6 x 5,0 x 4,0 mm



ELECTRICAL CHARACTERISTICS:

Part. No	L (μ H)	Q Min.	Test Frequency (MHz)	SRF (MHz.) Min.	RDC (Ω) Max.	IDC (mA) Max.
STW565050 – 181SWE *	180	20	0,796	4,4	2,8	190
STW565050 – 221SWE *	220	20	0,796	3,9	3,4	170
STW565050 – 271SWE *	270	20	0,796	3,6	4,2	155
STW565050 – 331SWE *	330	20	0,796	3,2	4,9	140
STW565050 – 391SWE *	390	20	0,796	2,9	5,8	130
STW565050 – 471SWE *	470	20	0,796	2,6	7,0	120
STW565050 – 561SWE *	560	20	0,796	2,4	8,5	110
STW565050 – 681SWE *	680	20	0,796	2,2	10,0	100
STW565050 – 821SWE *	820	20	0,796	2,0	13,0	90
STW565050 – 102SWE *	1000	20	0,252	1,8	15,0	85
STW565050 – 122SWE *	1200	20	0,252	1,5	17,0	75
STW565050 – 152SWE *	1500	20	0,252	1,4	20,0	70
STW565050 – 182SWE *	1800	20	0,252	1,3	30,0	60
STW565050 – 222SWE *	2200	20	0,252	1,2	35,0	55
STW565050 – 272SWE *	2700	20	0,252	1,1	55,0	45
STW565050 – 332SWE *	3300	20	0,252	1,0	60,0	40
STW565050 – 392SWE *	3900	20	0,252	1,0	70,0	38
STW565050 – 472SWE *	4700	20	0,252	0,9	78,0	36
STW565050 – 562SWE *	5600	20	0,252	0,8	85,0	33
STW565050 – 562SWE *	6800	20	0,252	0,7	110,0	30
STW565050 – 822SWE *	8200	20	0,252	0,6	125,0	28
STW565050 – 103SWE *	10000	15	0,0796	0,5	150,0	25

* : 1 μ H – 1000 μ H : 10%
>1000 μ H : 5%

NOTE : Specifications subject to change without notice. Please check our website for latest information.